

# LALIQUE

King Street · 16 May 2017



CHRISTIE'S



# LALIQUE

TUESDAY 16 MAY 2017

## AUCTION

Tuesday 16 May 2017  
at 2.00 pm Lots 1-109  
8 King Street, St. James's,  
London SW1Y 6QT

## AUCTION CODE AND NUMBER

In sending absentee bids or making enquiries, this sale should be referred to as **RENARD-14272**

## VIEWING

Saturday	13 May	12.00 noon – 5.00 pm
Sunday	14 May	12.00 noon – 5.00 pm
Monday	15 May	9.00 am – 5.00 pm
Tuesday	16 May	9.00 am – 12.00 noon

## AUCTIONEER

Jeremy Morrison

## STORAGE AND COLLECTION

Please refer to the important notice on page 100. Please note that Cadogan Tate's opening hours are Monday to Friday 9am to 5pm, and purchases transferred to their warehouse are not available for collection at weekends.

## SERVICES

### ABSENTEE AND TELEPHONE BIDS

Tel: +44 (0)20 7389 2658  
Fax: +44 (0)20 7930 8870

### AUCTION RESULTS

Tel: +44 (0)20 7839 9060  
christies.com

### CLIENT SERVICES

Tel: +44 (0)20 7839 9060  
Fax: +44 (0)20 7389 2869  
Email : info@christies.com

### POST-SALE SERVICES

Georgia Patsouraki  
Post-Sale Coordinator  
Payment, Shipping, and Collection  
Tel: +44 (0)20 7752 3200  
Fax: +44 (0)20 7752 3300  
Email: PostSaleUK@christies.com

### CONDITIONS OF SALE

This auction is subject to Important Notices, Conditions of Sale and to Reserves

### BUYING AT CHRISTIE'S

For an overview of the process, see the Buying at Christie's section.

[15]

**christies.com**

Front cover: Lots 72 and 71  
Opposite: Lot 74  
Page 2: Lot 31 (detail)  
Back cover: Lots 26 and 28  
Page 94: Lot 109 (detail)



Browse this auction and view real-time results on your iPhone, iPod Touch, iPad and Android

These auctions feature

**CHRISTIE'S**  **LIVE**

Bid live in Christie's salerooms worldwide  
register at christies.com

View catalogues and leave bids online  
at christies.com

**CHRISTIE'S**







## INTERNATIONAL DEPARTMENT DESIGN

### INTERNATIONAL HEAD

Sonja Ganne  
Tel: +33 (0)1 40 76 86 21

### EUROPEAN HEAD

Jeremy Morrison  
Tel: +44 (0)20 7752 3274

### INTERNATIONAL SPECIALIST

Simon Andrews  
Tel: +44 (0)20 7752 3380

### REGIONAL MANAGING DIRECTOR

Nick Sims  
Tel: +44 (0)20 7752 3003

### HEAD OF SALE MANAGEMENT

Matthew Rigg  
Tel +44 (0)20 7389 2221

### WORLDWIDE

#### LONDON

Jeremy Morrison  
Simon Andrews  
Joy McCall  
Raffaella Goffredi  
Tel: +44 (0)20 7752 3382

#### NEW YORK

Carina Villinger  
Beth Vilinsky  
Vanessa Booher  
Tel: +1 212 636 2240

#### PARIS

Sonja Ganne  
Pauline De Smedt  
Emmanuelle Karsenti  
Flavien Gaillard  
Tel: +33 (0)1 40 76 83 90

## SPECIALIST FOR THIS AUCTION

### SPECIALIST

Joy McCall  
*Director*  
Tel: +44 (0)20 7752 3237

### SALE COORDINATOR

Nicholas Challinor-Halford  
Tel: +44 (0)20 7752 3382

### EMAIL

First initial followed by last name@christies.com  
(eg. Nicholas Challinor-Halford =  
nchallinorhalford@christies.com.)  
For general enquiries about this auction,  
email should be addressed to the sale coordinator.

## INTERNATIONAL CALENDAR DESIGN

### LONDON

18 OCTOBER  
HISTORICAL DESIGN  
KING STREET

18 OCTOBER  
DESIGN  
KING STREET

### PARIS

16 MAY  
AN EDUCATED EYE  
CHEFS-D'ŒUVRE D'UNE  
COLLECTION PRIVÉE SUISSE

16 MAY  
DESIGN VENTE DU SOIR

### NEW YORK

7 JUNE  
DESIGN

The cover images were shot on location in Harrods, Knightsbridge, London, and Christie's would like to thank Harrods for making this possible.

### COPYRIGHT NOTICE

No part of this catalogue may be reproduced, stored in a retrieval system or transmitted by any form or by any means, electronic, mechanical, photocopying, recording or otherwise, without the prior written permission of Christie's.

© COPYRIGHT, CHRISTIE, MANSON & WOODS LTD. (2017)



**1**  
**AN ESTEREL VASE, NO. 941**

DESIGNED 1923

clear, frosted and blue stained  
6 in. (15.2 cm.) high  
intaglio *R. LALIQUE*

£1,000-1,500

\$1,300-1,900

€1,200-1,700



**2**  
**A MONNAIE DU PAPE VASE, NO. 897**

DESIGNED 1914

clear, frosted and blue stained  
9½ in. (24.2 cm.) high  
intaglio *R. LALIQUE*

£1,500-2,500

\$1,900-3,100

€1,800-2,900

3

**A SAUTERELLES VASE, NO. 888**

DESIGNED 1912

clear and frosted, blue and green stained

11 in. (28 cm.) high

engraved *R. Lalique France No. 888*

£4,000-6,000

\$5,100-7,500

€4,700-6,900







4

**A COQ ET RAISINS VASE, NO. 1034**

DESIGNED 1928

clear, frosted and blue stained

6¼ in. (15.9 cm.) high

wheel-engraved *R. LALIQUE FRANCE*

£1,000-1,500

\$1,300-1,900

€1,200-1,700



5

**A COQ ET PLUMES VASE, NO. 1033**

DESIGNED 1928

clear, frosted and blue stained

6¼ in. (15.9 cm.) high

wheel-engraved *R. LALIQUE FRANCE*

£1,000-1,500

\$1,300-1,900

€1,200-1,700

6

**AN IBIS VASE, NO. 1099**

DESIGNED 1934

clear, frosted and blue stained  
9½ in. (24.1 cm.) high  
stencilled *R. LALIQUE FRANCE*

£1,800-2,200

\$2,300-2,800

€2,100-2,500



7

**A SIX FIGURINES ET MASQUES VASE**

**NO. 886**

DESIGNED 1912

clear, frosted and blue stained

10 in. (25.4 cm.) high

intaglio *R. LALIQUE*

£2,500-3,500

\$3,200-4,400

€2,900-4,000





8

**AN ARCHER VASE, NO. 893**

DESIGNED 1921

clear, frosted and blue stained

11 in. (28 cm.) high

moulded *R. LALIQUE*

£3,500-4,500

\$4,400-5,600

€4,100-5,200



9

**AN ANVERS BOWL, NO. 408**

DESIGNED 1930

cobalt

15½ in. (39.4 cm.) diameter

wheel-engraved *R. LALIQUE FRANCE,*

engraved *No. 408*

£4,000-6,000

\$5,100-7,500

€4,700-6,900



10

**A SOUCIS VASE, NO. 1039**

DESIGNED 1930

cobalt and white stained  
7 in. (17.8 cm.) high  
indistinct stencil mark,  
later engraved *R. LALIQUE*

£2,500-3,500

\$3,200-4,400

€2,900-4,000



11

**A FONTAINEBLEAU VASE, NO. 1036**

DESIGNED 1930

cobalt and white stained  
7 in. (17.8 cm.) high  
stencilled *R. LALIQUE*, engraved *France*

£4,000-6,000

\$5,100-7,500

€4,700-6,900





**\*12**  
**A GRAINES VASE, NO. 1042**  
DESIGNED 1930

alexandrite  
8 in. (20 cm.) high  
stencilled R. LALIQUE FRANCE

£1,500-2,500

\$1,900-3,100

€1,800-2,900



\*13

**A TORTUES VASE, NO. 966**

DESIGNED 1926

alexandrite

10¾ in. (27.3 cm.) high

intaglio R. *LALIQUE*

£15,000-20,000

\$19,000-25,000

€18,000-23,000





■14  
A PAIR OF CHARMES PLAFONNIERS  
NO. 2458  
DESIGNED 1924

amber  
13½ in. (34.3 cm.) diameter  
moulded *R. LALIQUE*,  
wheel-engraved *FRANCE* (2)  
£2,500-3,500 \$3,200-4,400  
€2,900-4,000





■15  
**A PAIR OF LAUSANNE PLAFONNIERS**  
**NO. 2479**  
DESIGNED 1927

amber  
15 in. (38.2 cm.) diameter  
moulded *R. LALIQUE FRANCE* (2)  
£5,000-7,000      \$6,300-8,800  
                                 €5,800-8,100



■16

**A RONCES CHANDELIER, NO. 2465**

DESIGNED 1926

clear and frosted

27½ in. (69.8 cm.) diameter

£5,000-7,000

\$6,300-8,800

€5,800-8,100

17

**A PAIR OF VOLUTES  
CANDLESTICKS, NO. 2120**

DESIGNED 1934

clear and frosted  
8½ in. (20.5 cm.) high  
stencilled R. LALIQUE FRANCE (2)

£4,000-6,000

\$5,100-7,500

€4,700-6,900



\*18

**A PIERREFONDS VASE, NO. 990**

DESIGNED 1926

clear and frosted  
5⅞ in. (15 cm.) high; 13 in. (33 cm.) wide  
stencilled R. LALIQUE FRANCE

£3,000-5,000

\$3,800-6,300

€3,500-5,800





■19

**A DAHLIAS PLAFONNIER, NO. 2459**

DESIGNED 1921

clear and frosted, with later metal ceiling rose  
and suspension chains,  
12 in. (30.5 cm.) diameter  
wheel-engraved *R. LALIQUE*,  
engraved No. 384

£1,000-1,500

\$1,300-1,900

€1,200-1,700



■20

**A SOLIEL PLAFONNIER, NO. 2466**

DESIGNED 1926

clear and frosted, with a ceiling rose

12¼ in. (31 cm.) diameter

moulded *R. LALIQUE*

£2,200-2,800

\$2,800-3,500

€2,600-3,200





23

**A BISKRA VASE, NO. 1078**

DESIGNED 1932

double cased opalescent and green stained

11½ in. (29.2 cm.) high

stencilled *R. LALIQUE FRANCE*

£2,000-3,000

\$2,600-3,800

€2,400-3,500



24

**A MURES VASE, NO. 1058**

DESIGNED 1930

opalescent

7½ in. (19 cm.) high

stencilled *R. LALIQUE FRANCE*

£1,800-2,200

\$2,300-2,800

€2,100-2,500





\*25

**A SAUTERELLES VASE, NO. 888**

DESIGNED 1912

cased opalescent, and blue and green stained  
10¾ in. (27.3 cm.) high  
engraved *R. Lalique France*

£10,000-15,000

\$13,000-19,000

€12,000-17,000





**26**

**A MALESHERBES VASE, NO. 1014**

DESIGNED 1927

clear, frosted and sepia stained

9½ in. (24.1 cm.) high

engraved *R. Lalique France No. 1014*

£1,000-1,500

\$1,300-1,900

€1,200-1,700



**\*27**

**A SOLEILS VASE, NO. 10-901**

DESIGNED 1936

clear, frosted and sepia stained

9¼ in. (23.5 cm.) high

stencilled *R. LALIQUE*, engraved *France*

£2,000-3,000

\$2,600-3,800

€2,400-3,500

\*28

**A SOPHORA VASE, NO. 977**

DESIGNED 1926

clear, frosted and sepia stained

10¼ in. (26 cm.) high

intaglio R. LALIQUE

£3,000-5,000

\$3,800-6,300

€3,500-5,800





**\*29**

**A MOINEAUX TIMEPIECE ATO, B**  
DESIGNED 1924

clear and frosted, with metal face  
6½ in. (15.5 cm.) high; 8¾ in. (21.2 cm.) wide  
moulded R. *LALIQUE*,  
wheel-engraved R. *LALIQUE FRANCE*

£1,000-1,500

\$1,300-1,900

€1,200-1,700

**30**

**A CLOS SAINTE-ODILE ICE-BUCKET, A**  
DESIGNED 1922

clear, frosted and sepia stained  
9 in. (22.8 cm.) high  
moulded R. *LALIQUE*, *VIN DU CLOS ST*  
*ODILE REJOUIT LES COEURS*, *PIERRE*  
*WEISSENBURGER OBERNAI*

£1,800-2,200

\$2,300-2,800

€2,100-2,500





\*31

**A FUCHSIAS BOWL, NO. 386D**

DESIGNED 1921

clear and frosted with gilt highlights

4¾ in. (12 cm.) high; 9½ in. (24.1 cm.) wide

engraved *R. Lalique*

£3,000-5,000

\$3,800-6,300

€3,500-5,800



\*32

**A DOUZE FIGURINES AVEC BOUCHON**

**FIGURINE, NO. 914**

DESIGNED 1920

clear, frosted and sepia stained

12 in. (30.5 cm.) high

moulded *R. LALIQUE*, engraved *R. Lalique*

France No. 914

(2)

£3,000-5,000

\$3,800-6,300

€3,500-5,800



**\*33**

**A DU BARRY BOX AND COVER, NO. 56**

DESIGNED 1924

clear, frosted and sepia

10¼ in. (26 cm.) high

intaglio R. LALIQUE

(2)

£4,000-6,000

\$5,100-7,500

€4,700-6,900





**34**  
**AN ACTINIA VASE, NO. 10-889**  
DESIGNED 1934

clear, frosted and blue stained  
8 7/8 in. (21.9 cm.) high  
stencilled *R. LALIQUE*

£1,000-1,500

\$1,300-1,900

€1,200-1,700



**35**  
**A CHEVREUSE VASE, NO. 1081**  
DESIGNED 1930

clear, frosted and blue stained  
6 1/4 in. (15.9 cm.) high  
stencilled *R. LALIQUE FRANCE*

£1,000-1,500

\$1,300-1,900

€1,200-1,700



■\*36

**A SYRACUSE CHANDELIER, NO. 2476**

DESIGNED 1927

clear and frosted, with central bulb shade,  
suspension rod sheath and ceiling rose  
20½ in. (52 cm.) diameter  
wheel-engraved *R. LALIQUE*,  
engraved *France*

£3,000-5,000

\$3,800-6,300

€3,500-5,800



**37**

**A MALESHERBES VASE, NO. 1014**

DESIGNED 1927

cased jade and white stained

9¼ in. (23.5 cm.) high

engraved *R. Lalique France No. 1014*

£3,000-5,000

\$3,800-6,300

€3,500-5,800



**38**

**A RONCES VASE, NO. 946**

DESIGNED 1921

cased butterscotch  
9 $\frac{5}{8}$  in. (24.5 cm.) high  
moulded *R. LALIQUE*

£3,000-5,000

\$3,800-6,300

€3,500-5,800



**39**

**A RONCES VASE, NO. 946**

DESIGNED 1921

electric blue  
9 in. (22.9 cm.) high  
intaglio *R. LALIQUE*, later engraved *FRANCE*

£4,000-6,000

\$5,100-7,500

€4,700-6,900





**40**  
**A FORMOSE VASE, NO. 934**  
DESIGNED 1924

grey  
6¾ in. (17 cm.) high  
moulded *R. LALIQUE*

£2,000-3,000

\$2,600-3,800  
€2,400-3,500



**41**  
**A FORMOSE VASE, NO. 934**  
DESIGNED 1924

clear, frosted and blue stained  
7 in. (17.8 cm.) high  
engraved *R. Lalique France No. 934*

£1,000-1,500

\$1,300-1,900  
€1,200-1,700



42

**A FORMOSE VASE, NO. 934**

DESIGNED 1924

double cased scarlet red and white stained

7 in. (17.8 cm.) high

moulded *R. LALIQUE*

£5,000-8,000

\$6,300-10,000

€5,800-9,200



**43**  
**GROS POISSON, VAGUES AND GROS**  
**POISSON, ALGUES, NOS 1100 AND 1101**  
DESIGNED 1922

clear and frosted on bronze bases  
15¾ in. (40 cm.) high including base and smaller  
the former engraved *R. LALIQUE*,  
the latter moulded *R. LALIQUE* (4)

£8,000-12,000

\$11,000-15,000

€9,300-14,000







**44**  
**AN ARCHER CAR MASCOT, NO. 1126**

DESIGNED 1926

clear and frosted  
4¾ in. (12 cm.) high  
intaglio *R. LALIQUE*,  
wheel-engraved *FRANCE*

£1,000-1,500

\$1,300-1,900

€1,200-1,700



**45**  
**A SANGLIER CAR MASCOT, NO. 1157**  
DESIGNED 1929

grey  
2½ in. (6.4 cm.) high  
moulded *R. LALIQUE*,  
stencilled *R. LALIQUE FRANCE*

£1,500-2,500

\$1,900-3,100

€1,800-2,900



**46**

**A TETE D'EPERVIER CAR MASCOT**

**NO. 1139**

DESIGNED 1928

clear and frosted

2½ in. (6.3 cm.) high

moulded *LALIQUE FRANCE*

£1,800-2,200

\$2,300-2,800

€2,100-2,500



**47**

**A TETE D'AIGLE CAR MASCOT, NO. 1138**

DESIGNED 1928

clear and frosted

4¼ in. (10.8 cm.) high

moulded *R. LALIQUE FRANCE*

£2,500-3,500

\$3,200-4,400

€2,900-4,000



48

**A COQ HOUDAN CAR MASCOT, NO. 1161**

DESIGNED 1929

clear, frosted and grey stained

7½ in. (20 cm.) high

wheel-engraved *R. LALIQUE FRANCE*

£3,500-4,500

\$4,400-5,600

€4,100-5,200







**49**  
**A RENARD CAR MASCOT, NO. 1182**

DESIGNED 1930

clear and frosted

3 1/8 in. (8 cm.) high; 8 1/4 in. (21 cm.) long

stencilled *R. LALIQUE FRANCE*

£200,000-300,000

\$260,000-380,000

€240,000-350,000

Always at the forefront of contemporary fashion, it is no surprise that René Lalique would embrace the golden age of the motor car and chose to design car mascots. Between 1920 and 1931 he designed 30 mascots inspired by nature. Initially caps were employed to cover radiators on cars but they became increasingly elaborate as car manufacturers utilised the opportunity to display their emblems or logos, and for owners to have mascots as status symbols. Lalique's car mascots took for form of animals, figures, insects, birds, a fish and a star, and evoke associations with movement, speed, power and mythology. The Renard mascot is one of the rarest mascots with only a handful known to exist. As a subject the fox has a long and rich visual and literary history linked to themes of stealth, cunning and conquest. He is known as an enigmatic creature with mystical, impermanent and transmutable qualities, who is both wild and untameable.







**50**  
**A POISEDON VASE**  
 DESIGNED 2004

number 29 from an edition of 99, clear,  
 frosted and opalescent, boxed with a  
 certificate

11¾ in. (30 cm.) high  
 engraved *Lalique France 29/99*

£2,000-3,000	\$2,600-3,800
	€2,400-3,500

**■\*51**  
**A PAIR OF MADAGASCAR**  
**PLAFONNIERS, NO. 2481**  
 DESIGNED 1928

opalescent  
 13 in. (33 cm.) diameter  
 moulded *R. LALIQUE*

£12,000-18,000	\$16,000-23,000	(2)
	€14,000-21,000	







**52**

**A BELIERS VASE, NO. 904**

DESIGNED 1925

opalescent and blue stained

7½ in. (19.5 cm.) high

wheel-engraved *R. LALIQUE FRANCE*,  
engraved *No. 904*

£3,000-5,000

\$3,800-6,300

€3,500-5,800



**53**

**AN ORNIS VASE, NO. 976**

DESIGNED 1926

opalescent

7½ in. (19 cm.) high

wheel-engraved *R. LALIQUE FRANCE*

£1,500-2,500

\$1,900-3,100

€1,800-2,900



54

**A BACCHANTES VASE, NO. 997**

DESIGNED 1927

opalescent

9¾ in. (24.8 cm.) high

wheel-engraved *R. LALIQUE FRANCE*

£15,000-25,000

\$19,000-31,000

€18,000-29,000



**\*55**

**A BOUCHARDON VASE, NO. 981**

DESIGNED 1926

clear, frosted and blue stained

5 in. (12.7 cm.) high

intaglio *R. LALIQUE*, engraved *France*

£2,000-3,000

\$2,600-3,800

€2,400-3,500



**\*56**

**A RONSARD VASE, NO. 982**

DESIGNED 1926

clear, frosted and blue stained

8¼ in. (21 cm.) high

intaglio R. *LALIQUE*, later engraved *FRANCE*

£2,000-3,000

\$2,600-3,800

€2,400-3,500



57

**A SIRENES BOWL, NO. 375**

DESIGNED 1920

clear, frosted and blue stained  
14¼ in. (36.2 cm.) diameter  
engraved *Lalique*

£2,000-3,000

\$2,600-3,800

€2,400-3,500





58

**A PERRUCHES VASE, NO. 876**

DESIGNED 1919

clear, frosted and blue stained

10½ in. (26.7 cm.) high

intaglio *R. LALIQUE*, moulded *R. LALIQUE*

£3,000-5,000

\$3,800-6,300

€3,500-5,800



**59**

**A DESIGN SKETCH**

CIRCA 1895

pencil, pen and ink, purple and brown wash,  
heightened with body colour on paper,  
inscribed 974, *galbe, pour le 10, Le centre en or à 20 Serti de de brillants  
bruns (indistinct) Toute la silhouette serti perlé Les parties argent serties  
filet, Bts B (indistinct) 11c ¼*  
15¾ x 16½ in. (40 x 42 cm.) framed

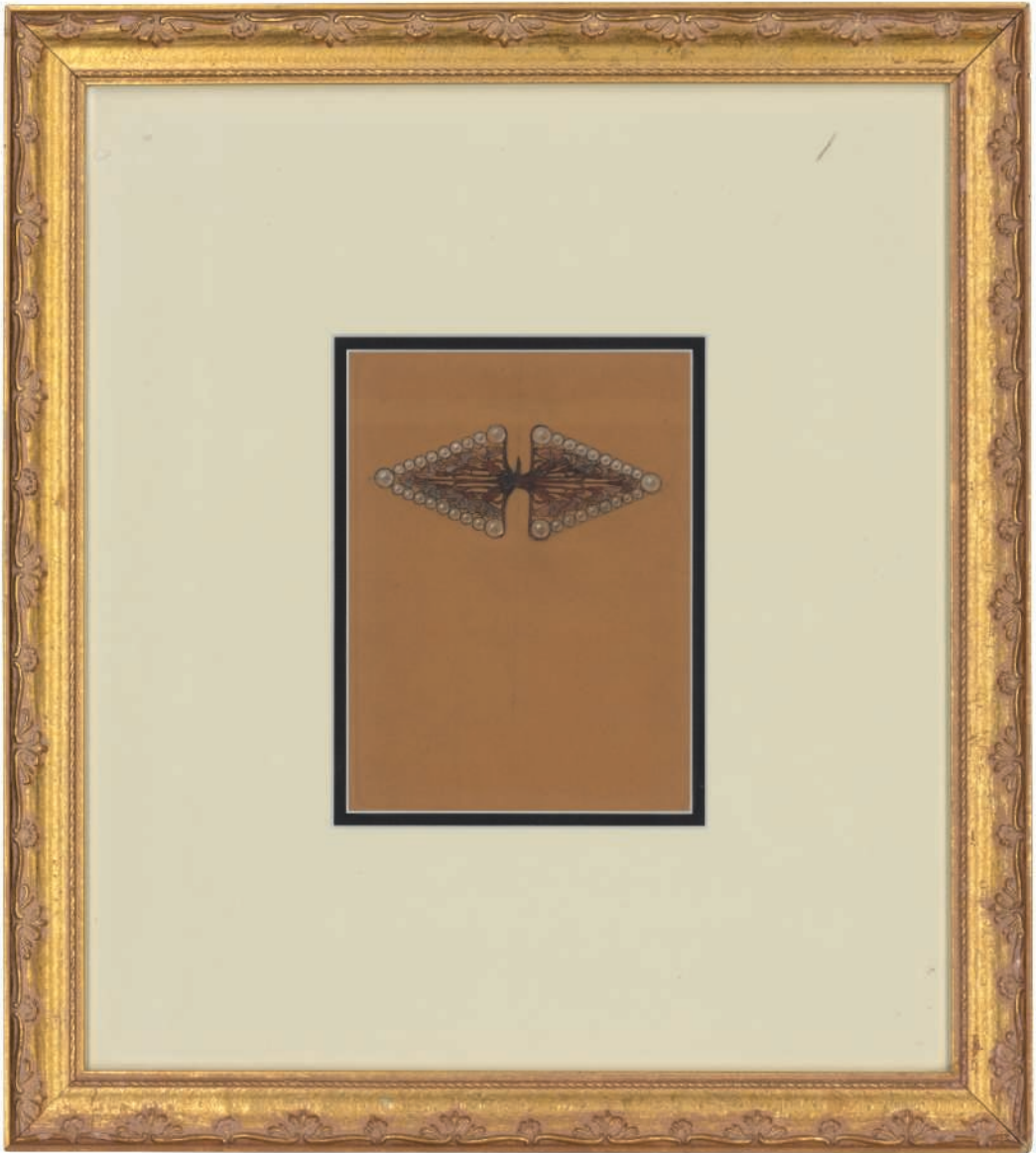
£1,000-1,500

\$1,300-1,900

€1,200-1,700

A similar diadem design appears in S. Barten, *René Lalique*  
- *Schmuck under Objects D'Art, 1890-1910*, Munich, 1989, p. 168, pl. 7.





**\*60**

**A DESIGN FOR A BUCKLE**

pencil, pen and ink, watercolour heightened  
with body colour, on buff paper

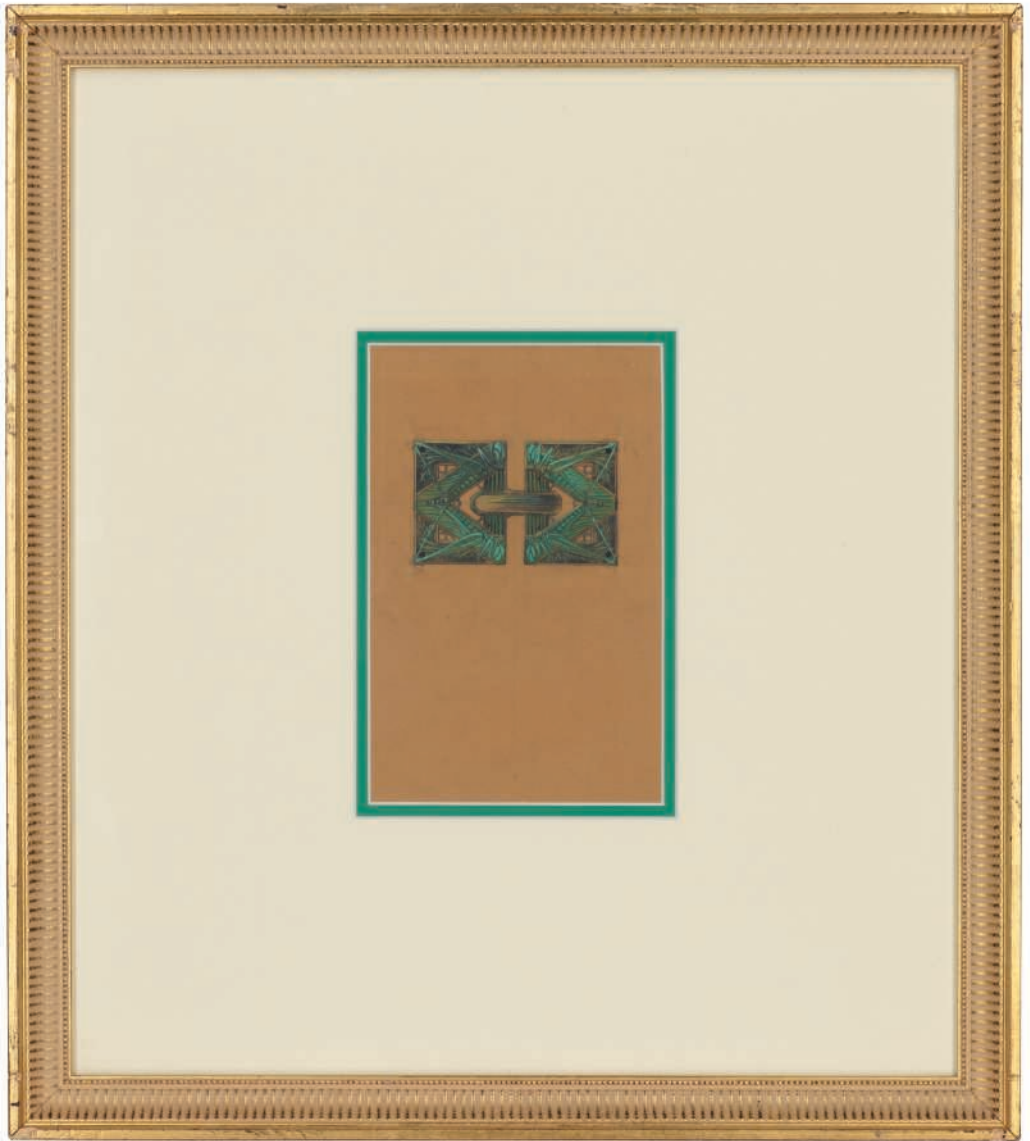
19¼ x 17½ in. (49.5 x 44.5 cm.) framed

£1,000-1,500

\$1,300-1,900

€1,200-1,700





**\*61**

**A DESIGN FOR A BUCKLE**

pencil, pen and ink, watercolour, heightened  
with body colour on buff paper with a  
watermark

18¾ x 16¾ in. (47.5 x 42.5 cm.) framed

£1,000-1,500

\$1,300-1,900

€1,200-1,700



**\*62**

**A DESIGN FOR A BRACELET**

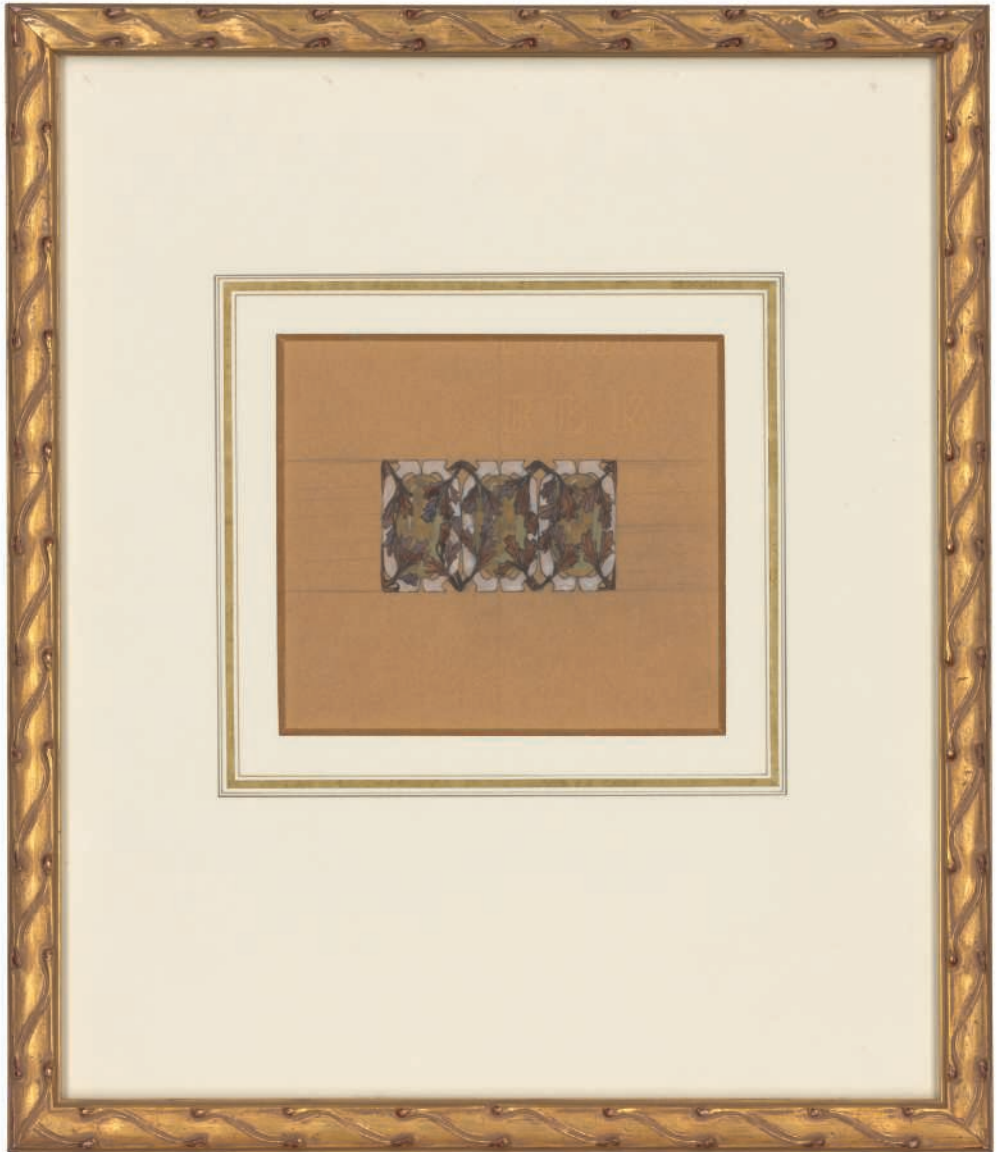
pencil, pen and ink, watercolour, heightened with body colour, on buff paper, inscribed *Les libelles du centre en émail translucide. Les autres (indistinct) et champlévé*

19¼ x 17½ in. (49.5 x 44.5 cm.) framed

£1,000-1,500

\$1,300-1,900

€1,200-1,700



**\*63**

**A DESIGN**

pencil, pen and ink, watercolour, on buff  
paper with a partial watermark  
17¼ x 15 in. (44 x 38 cm.) framed

£1,000-1,500

\$1,300-1,900

€1,200-1,700



**\*64**

**A DESIGN FOR A PENDANT**

pencil, pen and ink, watercolour, heightened  
with body colour, on buff paper with a  
watermark

16¾ x 14½ in. (42.5 x 36.9 cm.) framed

£1,000-1,500

\$1,300-1,900

€1,200-1,700





**\*65**

**A DESIGN FOR A CHOKER WITH  
PENDANT**

pencil, pen and ink, watercolour and body  
colour, on buff paper with a watermark  
19¼ x 16½ in. (49 x 42 cm.) framed

£1,000-1,500

\$1,300-1,900

€1,200-1,700



**-66**

**A COMMEMORATIVE MEDALLION**

CIRCA 1920

carved ivory  
2¼ in. (5.5 cm.) diameter  
carved *LALIQUE*

£1,500-2,500

\$1,900-3,100

€1,800-2,900

This commemorative medallion depicts Marianne the personification of France and symbol of liberty and reason, with figures in the fore who appear to be Senegalese soldiers.



**67**

**A HATPIN**

CIRCA 1900

carved agate and gold  
8¼ in. (21 cm.) long  
apparently unmarked, stamped *LALIQUE*

£1,500-2,500

\$1,900-3,100

€1,800-2,900



(detail)

68

**A VIDE POCHE**

CIRCA 1900

silver

4¾ in. (11.5 cm.) wide

stamped French control marks, *LALIQUE*, 3

£4,000-6,000

\$5,100-7,500

€4,700-6,900





(detail of reverse)

**69**

**RENE LALIQUE, ATTRIBUTED TO**

A HANDBAG, CIRCA 1900

calf leather, lined with silk

6 in. (15.3 cm.) high excluding handle

£10,000-15,000

\$13,000-19,000

€12,000-17,000





**70**

**A POIVRE VASE, NO. 901**

DESIGNED 1921

clear, frosted and grey stained

9¾ in. (24.8 cm.) high

intaglio *R. LALIQUE*

£1,200-1,800

\$1,600-2,300

€1,400-2,100



71

**AN INSEPARABLES VASE, NO. 887**

DESIGNED 1919

clear, frosted and black stained

13½ in. (34.3 cm.) high

moulded *R. LALIQUE*

£6,000-9,000

\$7,600-11,000

€7,000-10,000





**\*72**

**A GRENADÉ VASE, 1045**

DESIGNED 1930

black, and white stained  
4½ in. (11.5 cm.) high  
engraved *R. Lalique France*

£2,000-3,000

\$2,600-3,800

€2,400-3,500

**73**

**A DAHLIAS VASE, NO. 938**

DESIGNED 1923

clear, frosted, blue stained and black  
enamelled

4¾ in. (12 cm.) high

intaglio *R. LALIQUE*, later engraved *France*

£1,200-1,800

\$1,600-2,300

€1,400-2,100





74

**A HIRONDELLES VASE, NO. 889A**

DESIGNED 1919

clear, frosted and black stained

9¼ in. (23.5 cm.) high

intaglio *LALIQUE*

£8,000-12,000

\$11,000-15,000

€9,300-14,000







79

**A SERPENTS NECKLACE**

CIRCA 1920

amethyst glass, later silk  
each bead ½ in. (7 mm.) diameter

£2,000-3,000

\$2,600-3,800

€2,400-3,500



80

**A MOLINARD - 4  
CALENDAL SCENT BOTTLE**

DESIGNED 1930, EXECUTED POST-WAR

clear and frosted, boxed  
bottle 4¾ in. (12 cm.) high  
moulded *LALIQUE*, stencilled *MOLINARD*  
*PARIS FRANCE*, box printed *MOLINARD*  
*PARIS GRASSE*

£1,000-1,500

\$1,300-1,900

€1,200-1,700



**81**

**A LAURENCE QUATRE MASQUES  
PENDANT SCENT BOTTLE, NO. 1671**

DESIGNED 1913

clear, frosted and blue stained

1¾ in. (4.4 cm.) high

engraved *R. Lalique*, the stopper and bottle 99

£1,500-2,000

\$1,900-2,500

€1,800-2,300



**82**

**A PAN SCENT BOTTLE, NO. 504**

DESIGNED 1920

clear, frosted and blue stained

5 in. (12.7 cm.) high

moulded *R. LALIQUE*, engraved *France No. 504*

£1,000-1,500

\$1,300-1,900

€1,200-1,700







**83**  
**A DINARD BOX AND COVER, NO. 78**  
DESIGNED 1927

clear and frosted  
3 in. (7.6 cm.) high;  
5 in. (12.7 cm.) wide  
moulded *R. LALIQUE*,  
wheel-engraved *FRANCE*

£1,200-1,800

\$1,600-2,300

€1,400-2,100



**84**  
**A CHAT BOX AND COVER, NO. 90**  
DESIGNED 1932

clear and frosted  
2 in. (5 cm.) high;  
4¼ in. (10.8 cm.) wide;  
3¾ in. (9.5 cm.) deep  
stencilled *R. LALIQUE FRANCE*

£1,000-1,500

\$1,300-1,900

€1,200-1,700

**85**

**A SIRENES AVEC BOUCHON FIGURINE VASE,  
NO. 883**

DESIGNED 1920

clear and frosted

14½ in. (36 cm.) high

engraved *R. Lalique France No. 883*

£4,000-6,000

\$5,100-7,500

€4,700-6,900





**86**

**A COTE D'OR PLATE, NO. 10-406**

DESIGNED 1943

clear and frosted

15¼ in. (40 cm.) diameter

stencilled *R. LALIQUE FRANCE*

£1,800-2,200

\$2,300-2,800

€2,100-2,500



**87**

**A GANYMEDE CHAMPAGNE COOLER, NO. 11951**

DESIGNED 1955

clear and frosted

9 in. (22.8 cm.) high

engraved *Lalique France*, applied paper label

£1,500-2,000

\$1,900-2,500

€1,800-2,300



**88**  
**A QUATRE SAISONS SET OF STATUETTES,**  
**NOS 839-842**

DESIGNED 1939, LATER EXECUTED

comprising *Printemps, Eté, Automne* and *Hiver*,  
 clear and frosted  
 8 in. (20.3 cm.) high  
 engraved *Lalique France*

£2,500-3,500

(4)

\$3,200-4,400

€2,900-4,000



89

**A MOINEAUX TIMEPIECE ATO, B**

DESIGNED 1924

clear and frosted  
6½ in. (15.5 cm.) high  
moulded R. LALIQUE

£1,000-1,500

\$1,300-1,900

€1,200-1,700





**90**  
**A DEUX MOINEAUX DORMANT VASE,**  
**NO. 911**

DESIGNED 1920

clear and frosted, green and sepia stained

8 in. (20.2 cm.) high

engraved *Lalique*

£1,000-1,500

\$1,300-1,900

€1,200-1,700





**91**

**A SIRENE CAR MASCOT, NO. 831**

DESIGNED 1921

opalescent

4 in. (10.1 cm.) high

moulded *R. LALIQUE*,

engraved *R. Lalique France No. 831*

£1,500-2,500

\$1,900-3,100

€1,800-2,900



**\*92**

**A NAIADES TIMEPIECE, NO. 764**

DESIGNED 1926

opalescent and blue stained

4½ in. (11.4 cm.) high

moulded *R. LALIQUE*, engraved *France*

£1,500-2,500

\$1,900-3,100

€1,800-2,900

\*93

**A SAKS TRESOR DE LA MER**

DESIGNED 1936

opalescent

6¼ in. (15.8 cm.) wide

stencilled *R. LALIQUE FRANCE*

£8,000-10,000

\$11,000-13,000

€9,300-12,000





**94**  
**A QUATRE PAPILLONS BOX AND COVER,  
NO. 14**

DESIGNED 1911

opalescent and blue stained  
3¼ in. (8.3 cm.) diameter  
intaglio *LALIQUE DEPOSE*

£1,000-1,500

\$1,300-1,900

€1,200-1,700

**95**  
**AN OEILLETTS SHALLOW BOWL, NO. 422**

DESIGNED 1932

opalescent  
14⅞ in. (36 cm.) diameter  
stencilled *R. LALIQUE FRANCE*

£1,000-1,500

\$1,300-1,900

€1,200-1,700





96

**A BOULOURIS VASE, NO. 1094**

DESIGNED 1933

opalescent

6 in. (15.2 cm.) high

stencilled R. LALIQUE FRANCE

£1,000-1,500

\$1,300-1,900

€1,200-1,700



97

**A PERRUCHES BOWL, NO. 419**

DESIGNED 1931

opalescent and blue stained

9¾ in. (24.8 cm.) diameter

stencilled R. LALIQUE FRANCE

£2,200-2,800

\$2,800-3,500

€2,600-3,200







**98**

**A PROVENCE BOULE PLAFONNIER,  
NO. 2471**

DESIGNED 1927

clear and frosted, with chromed fitment  
13½ in. (34.3 cm.) high

£2,000-3,500

\$2,600-4,400

€2,400-4,000

**■\*99**

**A FEUILLES DE CHARMES CHANDELIER,  
NO. 2262**

DESIGNED 1921

clear and frosted  
19¼ in. (50 cm.) diameter  
moulded *R. LALIQUE*

£6,000-8,000

\$7,600-10,000

€7,000-9,200





■\*100  
A PAIR OF FEUILLES DE CHARMES CHANDELIERS,  
NO. 2262  
DESIGNED 1921  
clear and frosted  
19¼ in. (50 cm.) diameter  
moulded *R. LALIQUE* (2)  
£15,000-25,000 \$19,000-31,000  
€18,000-29,000





■101

**A COQUILLES PLAFONNIER, NO. 2460**

DESIGNED 1921

clear, frosted, and sepia stained

11 $\frac{1}{8}$  in. (30 cm.) diameter

engraved *R. Lalique France*

£1,000-1,500

\$1,300-1,900

€1,200-1,700





■102

A PAIR OF ST VINCENT PLAFONNIERS,  
NO. 2470

DESIGNED 1926

clear and frosted  
13.3/4 in. (35 cm.) diameter  
moulded R. LALIQUE

(2)

£4,000-6,000

\$5,100-7,500

€4,700-6,900

**\*103**

**A CEYLAN VASE, NO. 905**

DESIGNED 1924

opalescent and blue stained

9½ in. (24.1 cm.) high

wheel-engraved *R. LALIQUE, FRANCE,*

engraved *No. 905*

£4,000-6,000

\$5,100-7,500

€4,700-6,900



**\*104**

**AN ALICANTE VASE, NO. 998**

DESIGNED 1927

cased opalescent and blue stained

10 in. (25.4 cm.) high

engraved *R. Lalique France No. 998*

£15,000-25,000

\$19,000-31,000

€18,000-29,000



**105**

**A VIOLETTES VASE, NO. 930**

DESIGNED 1921

opalescent and blue stained

6¼ in. (15.9 cm.) high

wheel-engraved *R. LALIQUE FRANCE*,

engraved *No. 930*

£3,000-5,000

\$3,800-6,300

€3,500-5,800



106

**AN ORAN VASE, NO. 999**

DESIGNED 1927

opalescent and blue stained

10% in. (26.5 cm.) high

wheel-engraved *R. LALIQUE FRANCE*

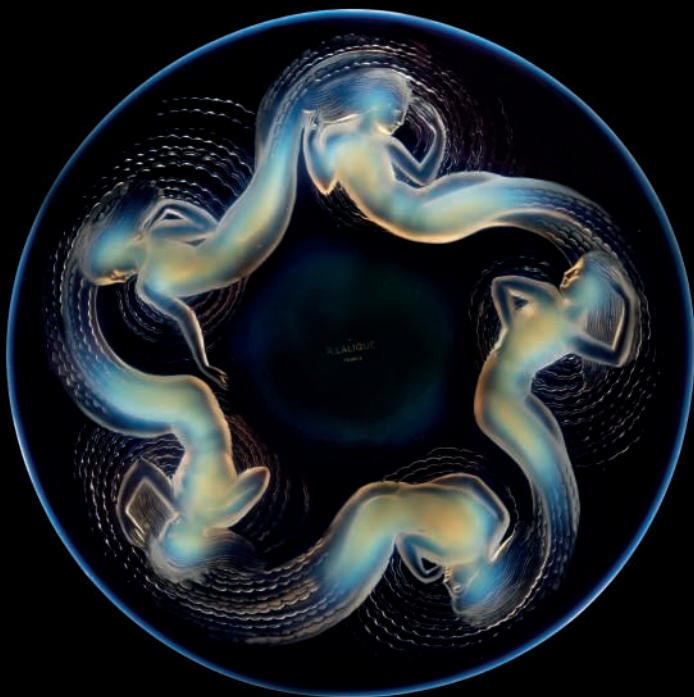
£10,000-15,000

\$13,000-19,000

€12,000-17,000







**\*107**

**A CALYPSO PLATE, NO. 414**

DESIGNED 1930

opalescent

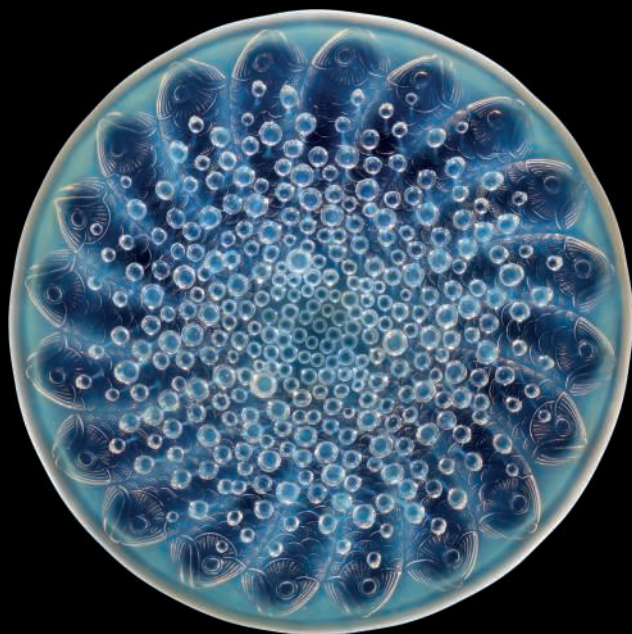
15 in. (38 cm.) diameter

stencilled *R. LALIQUE FRANCE*

£2,200-2,800

\$2,800-3,500

€2,600-3,200



**108**

**A ROSCOFF SHALLOW BOWL,  
NO. 10-383**

DESIGNED 1932

opalescent

14 in. (35.5 cm.) diameter

stencilled *R. LALIQUE FRANCE*

£1,500-2,500

\$1,900-3,100

€1,800-2,900

109

**A SALMONIDES VASE, NO. 1015**

DESIGNED 1928

opalescent and blue stained

12¼ in. (31 cm.) high

intaglio *R. LALIQUE*,

engraved *R. Lalique France No. 1015*

£15,000-25,000

\$19,000-31,000

€18,000-29,000



## INDEX

### A

Actinia, 34  
Alicante, 104  
Ambre, 75  
Anvers, 9  
Archer, 44  
Archers, 8

### B

Bacchantes, 54  
Béliers, 52  
Biskra, 23  
Bouchardon, 55  
Boulouris, 96

### C

Calypso, 107  
Ceylan, 103  
Charmes, 14  
Chat, 84  
Chevreuse, 35  
Clos Sainte-Odile, 30  
Coq et Plumes, 5  
Coq et Raisins, 4  
Coq Houdan, 48  
Coquilles, 101  
Côte D'Or, 86

### D

Dahlias, 19, 73  
Deux Moineaux Dormant, 90  
Dinard, 83  
Douze Figurines avec Bouchon Figurine, 32  
Du Barry, 33

### E

Esterel, 1

### F

Feuilles de Charmes, 100  
Feuilles des Charmes, 99  
Fontainebleau, 11  
Formose, 40, 41, 42  
Fuchsias, 31

### G

Ganymede, 87  
Graines, 12  
Grenade, 72  
Gros Poisson, 43

### H

Hirondelles, 74

### I

Ibis, 6  
Inséparables, 71

### L

Laurence Quatre Masques, 81  
Lausanne, 15  
Le Jade, 76

### M

Madagascar, 51  
Malesherbes, 26, 37  
Moineaux, 29, 89  
Monnaie du Pape, 2, 22  
Mossi, 21  
Mûres, 24

### N

Naiades, 92

### O

Oeillets, 95  
Oran, 106  
Ornis, 53

### P

Pan, 82  
Pâquerettes, 77  
Perruches, 58, 97  
Pierrefonds, 18  
Poisedon, 50  
Poivre, 70  
Provence Boule, 98

### Q

Quatre Papillons, 94  
Quatre Saisons, 88

### R

Renard, 49  
Ronce, 16  
Ronces, 38, 39  
Ronsard, 56  
Roscoff, 108

### S

Salmonides, 109  
Sanglier, 45  
Sauterelles, 3, 25  
Serpent, 78  
Serpents, 79  
Sirène, 91  
Sirènes, 57  
Sirènes avec Bouchon Figurine, 85  
Six Figurines et Masques, 7  
Soleils, 27  
Soliel, 20  
Sophora, 28  
Soucis, 10  
St Vincent, 102  
Syracuse, 36

### T

Tête D'Aigle, 47  
Tête D'Epervier, 46  
Tortues, 13  
Trésor de la Mer, 93

### V

Violettes, 105  
Volutes, 17



# CONDITIONS OF SALE • BUYING AT CHRISTIE'S

## CONDITIONS OF SALE

These Conditions of Sale and the Important Notices and Explanation of Cataloguing Practice set out the terms on which we offer the **lots** listed in this catalogue for sale. By registering to bid and/or by bidding at auction you agree to these terms, so you should read them carefully before doing so. You will find a glossary at the end explaining the meaning of the words and expressions coloured in bold.

Unless we own a lot (A symbol, Christie's acts as agent for the seller.

## A BEFORE THE SALE

### 1 DESCRIPTION OF LOTS

(a) Certain words used in the catalogue description have special meanings. You can find details of these on the page headed 'Important Notices and Explanation of Cataloguing Practice' which forms part of these terms. You can find a key to the Symbols found next to certain catalogue entries under the section of the catalogue called 'Symbols Used in this Catalogue for sale'. By registering to bid.

(b) Our description of any **lot** in the catalogue, any **condition report** and any other statement made by us (whether orally or in writing) about any lot, including about its nature or **condition**, artist, period, materials, approximate dimensions or **provenance** are our opinion and we should be relied upon as a statement of fact. We do not carry out in-depth research of the sort carried out by professional historians and scholars. All dimensions and weights are approximate only.

### 2 OUR RESPONSIBILITY FOR OUR DESCRIPTION OF LOTS

We do not provide any guarantee in relation to the nature of a **lot** apart from our **authenticity warranty** contained in paragraph E2 and to the extent provided in paragraph I below.

### 3 CONDITION

(a) The **condition** of **lots** sold in our auctions can vary widely due to factors such as age, previous damage, restoration, repair and wear and tear. Their nature means that they will rarely be in perfect **condition**. **Lots** are sold 'as is', in the **condition** they are in at the time of the sale, without any representation or warranty or assumption of liability of any kind as to condition by Christie's or by the seller.

(b) Any reference to **condition** in a catalogue entry or in a **condition report** will not amount to a full description of **condition**, and images may not show a **lot** clearly. Colours and shades may look different in print or on screen to how they look on physical inspection. **Condition reports** may be available to help you evaluate the **condition** of a **lot**. **Condition reports** are provided free of charge as a convenience to our clients and are for guidance only. They offer our opinion but they may not refer to all faults, inherent defects, restoration, alteration or adaptation because our staff are not professional restorers or conservators. For that reason they are not an alternative to examining a **lot** in person or taking your own professional advice. It is your responsibility to ensure that you have requested, received and considered any **condition report**.

### 4 VIEWING LOTS PRE-AUCTION

(a) If you are planning to bid on a **lot**, you should inspect it personally or through a knowledgeable representative before you make a bid to make sure that you accept the description and its **condition**. We recommend you get your own advice from a restorer or other professional adviser.

(b) Pre-auction viewings are open to the public free of charge. Our specialists may be available to answer questions at pre-auction viewings or by appointment.

### 5 ESTIMATES

**Estimates** are based on the **condition**, rarity, quality and **provenance** of the **lots** and on prices recently paid at auction for similar property. **Estimates** can change. Neither you, nor anyone else, may rely on any **estimates** as a prediction or guarantee of the actual selling price of a **lot** or its value for any other purpose. **Estimates** do not include the **buyer's premium** or any applicable taxes.

### 6 WITHDRAWAL

Christie's may, at its option, withdraw any **lot** at any time prior to or during the sale of a **lot**. Christie's has no liability to you for any decision to withdraw.

### 7 JEWELLERY

(a) Coloured gemstones (such as rubies, sapphires and emeralds) may have been treated to improve their look, through methods such as heating and oiling. These methods are accepted by the international jewellery trade but may make the gemstone less strong and/or require special care over time.

(b) All types of gemstones may have been improved by some method. You may request a gemmological report for any item which does not have a report. The request is made to us at least three weeks before the date of the auction and you pay the fee for the report.

(c) We do not obtain a gemmological report for every gemstone sold in our auctions. Where we do get gemmological reports from internationally recognised gemmological laboratories, such reports will be described in the catalogue. Reports from American gemmological laboratories will describe any improvement or treatment to the gemstone. Reports from European gemmological laboratories will describe any improvement or treatment only if we request that they do so, but will confirm when no improvement or treatment has been made. Because of differences in approach and technology, laboratories may not agree whether a particular gemstone has been treated, the amount of treatment or whether treatment is permanent. The gemmological laboratories will only report on the improvements or treatments known to the laboratories at the date of the report.

(d) For jewellery sales, **estimates** are based on the information in any gemmological report or, if no report is available, assume that the gemstones may have been treated or enhanced.

### 8 WATCHES & CLOCKS

(a) Almost all clocks and watches are repaired in their lifetime and may include parts which are not original. We do not give a **warranty** that any individual component part of any watch or clock is **authentic**. Watchbands described as 'associated' are not part of the original watch and may not be **authentic**. Clocks may be sold without pendulums, weights or keys.

(b) As collectors' watches and clocks often have very fine and complex mechanisms, a general service, change of battery or further repair work may be necessary, for which you are responsible. We do not give a **warranty** that any watch or clock is in good working order. Certificates are not available unless described in the catalogue.

(c) Most watches have been opened to find out the type and quality of movement. For that reason, watches with water resistant cases may not be waterproof and we recommend you have them checked by a competent watchmaker before use. Important information about the sale, transport and shipping of watches and watchbands can be found in paragraph H(2)(g).

### B REGISTERING TO BID

#### 1 NEW BIDDERS

(a) If this is your first time bidding at Christie's or you are a returning bidder who has not bought anything from any of our salerooms within the last two years you must register at least 48 hours before an auction to give us enough time to process and approve your registration. We may, at our option, decline to permit you to register as a bidder. You will be asked for the following:

(i) for individuals: Photo identification (driving licence, national identity card or passport) and, if not shown on the ID document, proof of your current address (for example, a current utility bill or bank statement).

(ii) for corporate clients: Your Certificate of Incorporation or equivalent document(s) showing your name and registered address together with documentary proof of directors and beneficial owners; and

(iii) for trusts, partnerships, offshore companies and other business structures, please contact us in advance to discuss our requirements.

(b) We may also ask you to give us a financial reference and/or a deposit as a condition of allowing you to bid. For help, please contact our Credit Department on +44 (0)20 7839 9060.

#### 2 RETURNING BIDDERS

We may at our option ask you for current identification as described in paragraph B(1)(a) above, a financial reference or a deposit as a condition of allowing you to bid. If you have not bought anything from any of our salerooms in the last two years or if you want to spend more than on previous occasions, please contact our Credit Department on +44 (0)20 7839 9060.

#### 3 IF YOU FAIL TO PROVIDE THE RIGHT DOCUMENTS

If in our opinion you do not satisfy our bid identification and registration procedures including but not limited to completing any anti-money laundering and/or anti-terrorism financing checks we may require to our satisfaction, we may refuse to register you to bid, and if you make a successful bid, we may cancel the contract for sale between you and the seller.

#### 4 BIDDING ON BEHALF OF ANOTHER PERSON

(a) **As authorised bidder.** If you are bidding on behalf of another person, that person will need to complete the registration requirements above before you can bid, and supply a signed letter authorising you to bid for him/her.

(b) **As agent for an undisclosed principal:** If you are bidding as an agent for an undisclosed principal (the ultimate buyer(s)), you accept personal liability to pay the **purchase price** and all other sums due. Further, you warrant that:

(i) you have conducted appropriate customer due diligence on the ultimate buyer(s) of the lot(s) in accordance with all applicable anti-money laundering and sanctions laws, consent to us relying on this due diligence, and you will retain for a period of not less than five years the documentation and records evidencing the due diligence;

(ii) you will make such documentation and records evidencing your due diligence promptly available for immediate inspection by an independent third-party auditor upon our written request to do so. We will not disclose such documentation and records to any third-parties unless (1) it is already in the public domain, (2) it is required to be disclosed by law, or (3) it is in accordance with anti-money laundering laws;

(iii) the arrangements between you and the ultimate buyer(s) are not designed to facilitate tax crimes;

(iv) you do not know, and have no reason to suspect, that the funds used for settlement are connected with, the proceeds of any criminal activity or that the ultimate buyer(s) are under investigation, charged with or convicted of money laundering, terrorist activities or other money laundering predicate crimes.

A bidder accepts personal liability to pay the **purchase price** and all other sums due unless it has been agreed in writing with Christie's before commencement of the auction that the bidder is acting as an agent on behalf of a named third party acceptable to Christie's and that Christie's will only seek payment from the named third party.

#### 5 BIDDING IN PERSON

If you wish to bid in the saleroom you must not agree through a numbered bidding paddle at least 30 minutes before the auction. You may register online at [www.christies.com](http://www.christies.com) or in person. For help, please contact the Credit Department on +44 (0)20 7839 9060.

## 6 BIDDING SERVICES

The bidding services described below are a free service offered as a convenience to our clients and Christie's is not responsible for any error (human or otherwise), omission or breakdown in providing these services.

### (a) Phone Bids

Your request for this service must be made no later than 24 hours prior to the auction. We will accept bids by telephone for lots only if our staff are available to take the bids. If you need to bid in a language other than in English, you must arrange this well before the auction. We may record telephone bids. By bidding on the telephone, you are agreeing to us recording your conversations. You also agree that your telephone bids are governed by these Conditions of Sale.

### (b) Internet Bids on Christie's Live™

For certain auctions we will accept bids over the Internet. Please visit [www.christies.com/livebidding](http://www.christies.com/livebidding) and click on the 'Bid Live' icon to see details of how to watch, hear and bid at the auction from your computer. As well as these Conditions of Sale, internet bids are governed by the Christie's LIVE™ terms of use which are available on [www.christies.com](http://www.christies.com).

### (c) Written Bids

You can find a Written Bid Form at the back of our catalogues, at any of our offices or by choosing the sale and viewing the lots online at [www.christies.com](http://www.christies.com). We must receive your completed Written Bid Form at least 24 hours before the auction. Bids must be placed in the currency of the saleroom. The auctioneer will take reasonable steps to carry out written bids at the lowest possible price, taking into account the **reserve**. If you make a written bid on a **lot** which does not have a **reserve** and there is no higher bid than yours, we will bid on your behalf at around 50% of the **low estimate** or, if lower, the amount of your bid. If we receive written bids on a **lot** for identical amounts, and at the auction these are the highest bids on the **lot**, we will sell the **lot** to the bidder whose written bid we received first.

## C AT THE SALE

### 1 WHO CAN ENTER THE AUCTION

We may, at our option, refuse admission to our premises or decline to permit participation in any auction to or reject any bid.

### 2 RESERVE

Unless otherwise indicated, all lots are subject to a **reserve**. We identify **lots** that are offered without **reserve** with the symbol **x** next to the **lot** number. The reserve cannot be more than the **lot's low estimate**.

### 3 AUCTIONEER'S DISCRETION

The auctioneer can at his sole option:

- refuse any bid;
- move the bidding backwards or forwards in any way he or she may decide, or change the order of the **lots**;
- withdraw any **lot**;
- divide any **lot** or combine any two or more **lots**;
- reopen or continue the bidding even after the hammer has fallen; and
- in the case of error or dispute and whether during or after the auction, to continue the bidding, determine the successful bidder, cancel the sale of the **lot**, or reoffer and resell any **lot**. If any dispute relating to bidding arises during or after the auction, the auctioneer's decision in exercise of this option is final.

### 4 BIDDING

The auctioneer accepts bids from:

- bidders in the saleroom;
- telephone bidders, and internet bidders through 'Christie's LIVE™' (as shown above in Section B6); and
- written bids (also known as absentee bids or commission bids) left with us by a bidder before the auction.

### 5 BIDDING ON BEHALF OF THE SELLER

The auctioneer may, at his or her sole option, bid on behalf of the seller up to but not including the amount of the **reserve** either by making consecutive bids or by making bids in response to other bidders. The auctioneer will not identify these as bids made on behalf of the seller and will not make any bid on behalf of the seller at or above the **reserve**. If **lots** are offered without **reserve**, the auctioneer will generally decide to open the bidding at 50% of the **low estimate** for the **lot**. If no bid is made at that level, the auctioneer may decide to go backwards at his or her sole option until a bid is made, and then continue up from that amount. In the event that there are no bids on a **lot**, the auctioneer may deem such **lot** unsold.

### 6 BID INCREMENTS

Bidding generally starts below the **low estimate** and increases in steps (bid increments). The auctioneer will decide at his or her sole option where the bidding should start and the bid increments. The usual bid increments are shown for guidance only on the Written Bid Form at the back of this catalogue.

### 7 CURRENCY CONVERTER

The saleroom video screens (and Christie's LIVE™) may show bids in some other major currencies as well as sterling. Any conversion is for guidance only and we cannot be bound by any rate of exchange used. Christie's is not responsible for any error (human or otherwise), omission or breakdown in providing these services.

## 8 SUCCESSFUL BIDS

Unless the auctioneer decides to use his or her discretion as set out in paragraph C3 above, when the auctioneer's hammer strikes, we have accepted the last bid. This means a contract for sale has been formed between the seller and the successful bidder. We will issue an invoice only to the registered bidder who made the successful bid. While we send out invoices by post and/or email after the auction, we do not accept responsibility for telling you whether or not your bid was successful. If you have been bid by written bid, you should contact us by telephone or in person as soon as possible after the auction to get details of the outcome of your bid to avoid having to pay unnecessary storage charges.

## 9 LOCAL BIDDING LAWS

You agree that when bidding in any of our sales that you will strictly comply with all local laws and regulations in force at the time of the sale for the relevant sale site.

## D THE BUYER'S PREMIUM, TAXES AND ARTIST'S

### RESALE ROYALTY

#### 1 THE BUYER'S PREMIUM

In addition to the **hammer price**, the successful bidder agrees to pay us a **buyer's premium** on the **hammer price** of each lot sold. On all lots we charge 25% of the **hammer price** up to and including £100,000, 20% on that part of the **hammer price** over £100,000 and up to and including £2,000,000, and 12% of that part of the **hammer price** above £2,000,000.

#### 2 TAXES

The successful bidder is responsible for any applicable tax including any VAT, sales or compensating use tax or equivalent tax wherever such taxes may arise on the **hammer price** and the **buyer's premium**. It is the buyer's responsibility to ascertain and pay all taxes due. You can find details of how VAT and VAT reliefs are dealt with on the section of the catalogue headed 'VAT Symbols and Explanation'. VAT charges and refunds depend on the particular circumstances of the buyer so this section, which is not exhaustive, should be used only as a general guide. In all circumstances EU and UK law takes precedence. If you have any questions about VAT, please contact Christie's VAT Department on +44 (0)20 7389 9060 (email: VAT\_London@christies.com, fax: +44 (0)20 3219 6078). Christie's recommends you obtain your own independent tax advice.

For lots Christie's ships to the United States, a state sales or use tax may be due on the **hammer price**, **buyer's premium** and shipping costs on the lot, regardless of the nationality or citizenship of the purchaser. Christie's is currently required to collect sales tax for lots it ships to the state of New York. The applicable sales tax rate will be determined based upon the state, county, or locale to which the lot will be shipped. Successful bidders claiming an exemption from sales tax must provide appropriate documentation to Christie's prior to the release of the lot. For shipments to those states for which Christie's is not required to collect sales tax, a successful bidder may be required to remit use tax to that state's tax authorities. Christie's recommends you obtain your own independent tax advice with further questions.

#### 3 ARTIST'S RESALE ROYALTY

In certain countries, local laws entitle the artist or the artist's estate to a royalty known as 'artist's resale right' when an lot created by the artist is sold. We identify these lots with the symbol  $\lambda$  next to the lot number. In such cases, you must pay us an extra amount equal to the royalty. We will pay the royalty to the appropriate authority on the seller's behalf.

The artist's resale royalty applies if the **hammer price** of the lot is 1,000 euro or more. The total royalty for any lot cannot be more than 12,500 euro. We work out the amount owed as follows: **Royalty for the portion of the hammer price (in euros)**

4% up to 50,000
3% between 50,000.01 and 200,000
1% between 200,000.01 and 350,000
0.50% between 350,000.01 and 500,000
over 500,000, the lower of 0.25% and 12,500 euro.

We will work out the artist's resale royalty using the euro to sterling rate of exchange of the European Central Bank on the day of the auction.

## E WARRANTIES

### 1 SELLER'S WARRANTIES

For each lot, the seller gives a **warranty** that the seller:

- is the owner of the lot or a joint owner of the lot acting with the permission of the other co-owners or, if the seller is not the owner or a joint owner of the lot, has the permission of the owner to sell the lot, or the right to do so in law; and
- has the ability to transfer ownership of the lot to the buyer without any restrictions or claims by anyone else.

If either of the above **warranties** are incorrect, the seller shall not have to pay more than the **purchase price** (as defined in paragraph F1(a) below) paid by you to the seller. The seller will not be responsible to you for any reason for loss of profits or business, expected savings, loss of opportunity or interest, costs, damages, other damages or expenses. The seller gives no **warranty** in relation to any lot other than as set out above and, as far as is allowed by law, all **warranties** from the seller to you, and all other obligations upon the seller which may be added to this agreement by law, are excluded.

### 2 OUR AUTHENTICITY WARRANTY

We warrant, subject to the terms below, that the lots in our sales are authentic (our **authenticity warranty**). If, within five years of the date of the auction, you satisfy us that your lot is not authentic, subject to the terms below, we will refund the **purchase price** paid

by you. The meaning of **authentic** can be found in the glossary at the end of these Conditions of Sale. The terms of our **authenticity warranty** are as follows:

- It will be honoured for a period of five years from the date of the auction. After such time, we will not be obligated to honour the **authenticity warranty**.
- It is given only for information shown in **UPPERCASE type** in the first line of the **catalogue description** (the **Heading**). It does not apply to any information other than in the **Heading** even if shown in **UPPERCASE type**.
- The **authenticity warranty** does not apply to any **Heading** or part of a **Heading** which is **qualified**. **Qualified** means limited by a clarification in a lot's **catalogue description** or by the use in a **Heading** of one of the terms listed in the section titled **Qualified Headings** on the page of the catalogue headed 'Important Notices and Explanation of Cataloguing Practice'. For example, use of the term 'ATTRIBUTED TO...' in a **Heading** means that the lot is in Christie's opinion probably a work by the named artist but **no warranty** is provided that the lot is the work of the named artist. Please see the full list of **Qualified Headings** and a lot's full **catalogue description** before bidding.
- The **authenticity warranty** applies to the **Heading** as amended by any **Saleroom Notice**.
- The **authenticity warranty** does not apply where scholarship has developed since the auction **qualified** to a change in generally accepted opinion. Further, it does not apply if the **Heading** either matched the generally accepted opinion of experts at the date of the sale or drew attention to any conflict of opinion.
- The **authenticity warranty** does not apply if the lot can only be shown not to be **authentic** by a scientific process which, on the date we published the catalogue, was not available or generally accepted for use, or which was unreasonably expensive or impractical, or which was likely to have damaged the lot.
- The benefit of the **authenticity warranty** is only available to the original buyer shown on the invoice for the lot issued at the time of the sale and only if the original buyer has owned the lot continuously between the date of the auction and the date of claim. It may not be transferred to anyone else.
- In order to claim under the **authenticity warranty** you must:
  - give us written details, including full supporting evidence, of any claim within five years of the date of the auction;
  - if Christie's option, we may require you to provide the written opinions of two recognised experts in the field of the lot mutually agreed by you and us in advance confirming that the lot is not **authentic**. If we have any doubts, we reserve the right to obtain additional opinions at our expense; and
  - return the lot at your expense to the saleroom from which you bought it in the **condition** it was in at the time of sale.
- Your only right under this **authenticity warranty** is to cancel the sale and receive a refund of the **purchase price** paid by you to us. We will not, in any circumstances, be required to pay you more than the **purchase price** nor will we be liable for any loss of profits or business, loss of opportunity or value, expected savings or interest, costs, damages, other damages or expenses.
- Books**. Where the lot is a book, we offer an additional **warranty** for 14 days from the date of the sale that if on collation any lot is defective in text or illustration, we will refund your **purchase price**, subject to the following terms:
  - This additional **warranty** does not apply to:
    - the absence of blanks, half titles, tissue guards or advertisements, damage in respect of bindings, stains, spotting, marginal tears or other defects not affecting completeness of the text or illustration;
    - drawings, autographs, letters or manuscripts, signed photographs, sketches or periodicals;
    - books not identified by title;
  - lots sold without a printed estimate;
  - books which are described in the catalogue as sold not subject to return; or
  - defects stated in any **condition report** or announced at the time of sale.
- To make a claim under this paragraph you must give written details of the defect and return the lot to the saleroom at which you bought it in the same **condition** as at the time of sale, within 14 days of the date of the sale.

(k) **South East Asian Modern and Contemporary Art and Chinese Calligraphy and Painting**

In these categories, the **authenticity warranty** does not apply because current scholarship does not permit the making of definitive statements. Christie's does, however, agree to cancel a sale in either of these two categories of art where it has been proven the lot is a forgery. Christie's will refund to the original buyer the purchase price in accordance with the terms of Christie's authenticity warranty, provided that the original buyer notifies us with full supporting evidence documenting the forgery claim within twelve (12) months of the date of the auction. Such evidence must be satisfactory to us that the lot is a forgery in accordance with paragraph E2(h)(iii) above and the lot must be returned to us in accordance with E2(h)(iii) above. Paragraphs E2(b), (c), (d), (e), (f) and (g) and (i) also apply to a claim under these categories.

(l) **Books**. Where the lot is a book, we offer an additional **warranty** for 14 days from the date of the sale that if on collation any lot is defective in text or illustration, we will refund your **purchase price**, subject to the following terms:

- This additional **warranty** does not apply to:
  - the absence of blanks, half titles, tissue guards or advertisements, damage in respect of bindings, stains, spotting, marginal tears or other defects not affecting completeness of the text or illustration;
  - drawings, autographs, letters or manuscripts, signed photographs, sketches or periodicals;
  - books not identified by title;
- lots sold without a printed estimate;
- books which are described in the catalogue as sold not subject to return; or
- defects stated in any **condition report** or announced at the time of sale.

(m) To make a claim under this paragraph you must give written details of the defect and return the lot to the saleroom at which you bought it in the same **condition** as at the time of sale, within 14 days of the date of the sale.

(n) **South East Asian Modern and Contemporary Art and Chinese Calligraphy and Painting**

In these categories, the **authenticity warranty** does not apply because current scholarship does not permit the making of definitive statements. Christie's does, however, agree to cancel a sale in either of these two categories of art where it has been proven the lot is a forgery. Christie's will refund to the original buyer the purchase price in accordance with the terms of Christie's authenticity warranty, provided that the original buyer notifies us with full supporting evidence documenting the forgery claim within twelve (12) months of the date of the auction. Such evidence must be satisfactory to us that the lot is a forgery in accordance with paragraph E2(h)(iii) above and the lot must be returned to us in accordance with E2(h)(iii) above. Paragraphs E2(b), (c), (d), (e), (f) and (g) and (i) also apply to a claim under these categories.

## F PAYMENT

### 1 HOW TO PAY

- Immediately following the auction, you must pay the **purchase price** being:
  - the **hammer price**; and
  - the **buyer's premium**; and
  - any amounts due under section D3 above; and
  - any duties, goods, sales, use, compensating or service tax or VAT. Payment is due no later than by the end of the seventh calendar day following the date of the auction (the **due date**).

(ii) We will only accept payment from the registered bidder. Once issued, we cannot change the buyer's name on an invoice or re-issue the invoice in a different name. You must pay immediately even if you want to export the lot and you need an export licence.

(c) You must pay for lots bought at Christie's in the United Kingdom in the currency stated on the invoice in one of the following ways:

- Wire transfer

- You must make payments to:  
Lloyds Bank Plc, City Office, PO Box 217, 72 Lombard Street, London EC3P 3BT. Account number: 0017210, sort code: 30-00-02 Swift code: LOYDGB2LCT. IBAN (international bank account number): GB81 2000 0300 0200 1727 10.
- Credit Card.

We accept most major credit cards subject to certain conditions. To make a cardholder net present (CNP) payment, you must complete a CNP authorisation form which you can get from our Cashiers Department. You must send a completed CNP authorisation form by fax to +44 (0)20 7389 2869 or by post to the address set out in paragraph (d) below. If you want to make a CNP payment over the telephone, you must call +44 (0)20 7389 9060. CNP payments cannot be accepted by all salerooms and are subject to certain restrictions. Details of the conditions and restrictions applicable to credit card payments are available from our Cashiers Department, whose details are set out in paragraph (d) below.

If you pay for your purchase using a credit card issued outside the region of the sale, depending on the type of credit card and account you hold, the payment may incur a cross-border transaction fee. If you think this may apply to you, please check with your credit card issuer before making the payment. We reserve the right to charge you any transaction or processing fees which we incur when processing your payment.

Please note that for sales that permit online payment, certain transactions will be ineligible for credit card payment.

### (iii) Cash

We accept cash subject to a maximum of £5,000 per buyer per year on our Cashier's Department only (subject to conditions).

### (iv) Banker's draft

You must make these payable to Christie's and there may be conditions.

### (v) Cheque

You must make cheques payable to Christie's. Cheques must be from accounts in pounds sterling from a United Kingdom bank.

(d) You must quote the sale number, your invoice number and client number when making a payment. All payments sent by post must be sent to: Christie's, Cashiers Department, 8 King Street, St James's, London SW1Y 6QT.

(e) For more information please contact our Cashiers Department by phone on +44 (0)20 7389 9060 or fax on +44 (0)20 7389 2869.

## 2. TRANSFERRING OWNERSHIP TO YOU

You will not own the lot and ownership of the lot will not pass to you until we have received full and clear payment of the **purchase price**, even in circumstances where we have released the lot to the buyer.

## 3 TRANSFERRING RISK TO YOU

The risk in and responsibility for the lot will transfer to you from whichever is the earlier of the following:

- When you collect the lot or
- At the end of the 30th day following the date of the auction or, if earlier, the date the lot is taken into care by a third party warehouse as set out on the page headed 'Storage and Collection', unless we have agreed otherwise with you in writing.

## 4 WHAT HAPPENS IF YOU DO NOT PAY

(a) If you fail to pay us the **purchase price** in full by the **due date**, we will be entitled to do one or more of the following (as well as enforce our rights under paragraph F5 and any other rights or remedies we have by law):

- to charge interest from the **due date** at a rate of 5% a year above the UK Lloyds Bank base rate from time to time on the unpaid amount due;
- we can cancel the sale of the lot. If we do this, we may sell the lot again, publicly or privately on such terms we shall think necessary or appropriate, in which case you must pay us any shortfall between the **purchase price** and the proceeds from the resale. You must also pay all costs, expenses, losses, damages and legal fees we have to pay or may suffer and any shortfall in the seller's commission on the resale;
- we can pay the seller an amount up to the net proceeds payable in respect of the amount bid by your default in which case you acknowledge and understand that Christie's will have all of the rights of the seller to pursue you for such amounts;
- we can hold you legally responsible for the **purchase price** and may begin legal proceedings to recover it together with other losses, interest, legal fees and costs as far as we are allowed by law;
- we can take what you owe us from any amounts which we or any company in the **Christie's Group** may owe you (including any deposit or other part-payment which you have paid to us);
- we can, at our option, reveal your identity and contact details to the seller;
- we can reject at any future auction any bids made by or on behalf of the buyer or to obtain a deposit from the buyer before accepting any bids;
- we will exercise all the rights and remedies of a person holding security over any property in our possession owned by you, whether by way of pledge, security interest or in any other way as permitted by the law of the place where such property is located. You will be deemed to have granted such security to us and we may retain such property as collateral security for your obligations to us; and
- we can take any other action we see necessary or appropriate.

(b) If you owe money to us or to another **Christie's Group** company, we can use any amount you do pay, including any deposit or other part-payment you have made to us, or which we owe you, to pay off any amount you owe to us or another **Christie's Group** company for any transaction.

(c) If you make payment in full after the **due date**, and we choose to accept such payment we may charge you storage and transport costs from the date that is 30 calendar days following the auction in accordance with paragraphs G(d) and (ii). In such circumstances paragraph G(d)(v) shall apply.



## 5 KEEPING YOUR PROPERTY

If you owe money to us or to another **Christie's Group** company, as well as the rights set out in F4 above, we can use or deal with any of your property we hold or which is held by another **Christie's Group** company in any way we are allowed to by law. We will only release your property to you after you pay us or the relevant **Christie's Group** company in full for what you owe. However, if we choose, we can also sell your property in part or in full as we think appropriate. We will use the proceeds of the sale against any amounts you owe us and we will pay any amount left from that sale to you. If there is a shortfall, you must pay us any difference between the amount we have received from the sale and the amount you owe us.

## G COLLECTION AND STORAGE

(a) We ask that you collect purchased **lots** promptly following the auction (but note that you may not collect any lot until you have made full and clear payment of all amounts due to us).

(b) Information on collecting **lots** is set out on the storage and collection page and on an information sheet which you can get from the bidder registration staff or Christie's cashiers on +44 (0)20 7839 9060.

(c) If you do not collect any lot promptly following the auction we can, at our option, remove the lot to another Christie's location or an affiliate or third party warehouse.

(d) If you do not collect a lot by the end of the 30th day following the date of the auction, unless otherwise agreed in writing:

(i) we will charge you storage costs from that date.

(ii) we can at our option remove the lot or within an affiliate or third party warehouse and charge you transport costs and administration fees for doing so.

(iii) we may sell the lot in any commercially reasonable way we think appropriate.

(iv) the storage terms which can be found at [christies.com/storage](http://christies.com/storage) shall apply.

(v) Nothing in this paragraph is intended to limit our rights under paragraph F4.

## H TRANSPORT AND SHIPPING

### 1 TRANSPORT AND SHIPPING

We will enclose a transport and shipping form with each invoice sent to you. You must complete all transport and shipping arrangements. However, we can arrange to pack, transport and ship your property if you ask us to and pay the costs of doing so. We recommend that you ask us for an **estimate**, especially for any large items or items of high value that need professional packing before you bid. We may also suggest other handlers, packers, transporters or experts if you ask us to do so. For more information, please contact Christie's Art Transport on +44 (0)20 7839 9060. See the information set out at [www.christies.com/shipping](http://www.christies.com/shipping) or contact us at [arttransport\\_london@christies.com](mailto:arttransport_london@christies.com). We will take reasonable care when we are handling, packing, transporting and shipping a lot. However, if we recommend another company for any of these purposes, we are not responsible for their acts, failure to act or neglect.

### 2 EXPORT AND IMPORT

Any lot sold at auction may be affected by laws on exports from the country in which it is sold and the import restrictions of other countries. Many countries require a declaration of export for property leaving the country and/or an import declaration on entry of property into the country. Local laws may prevent you from importing a lot or may prevent you selling a lot in the country you import it into.

(a) You alone are responsible for getting advice about and meeting the requirements of any laws or regulations which apply to exporting or importing any lot prior to bidding. If you are refused a licence or there is a delay in getting one, you must still pay us in full for the lot. We may be able to help you apply for the appropriate licences if you ask us to pay our fee for doing so. However, if we cannot guarantee that we will get one. For more information, please contact Christie's Art Transport Department on +44 (0)20 7839 9060. See the information set out at [www.christies.com/shipping](http://www.christies.com/shipping) or contact us at [arttransport\\_london@christies.com](mailto:arttransport_london@christies.com).

### (b) Lots made of protected species

**Lots** made of or including (regardless of the percentage) endangered and other protected species of wildlife are marked with the symbol - in the catalogue. This material includes, among other things, ivory, tortoiseshell, crocodile skin, rhinoceros horn, whalebone, certain species of coral, and Brazilian rosewood. You should check the relevant customs laws and regulations before bidding on any lot containing wildlife material if you plan to import the lot into another country. Several countries refuse to allow you to import property containing these materials, and some other countries require a licence from the relevant regulatory agencies in the countries of exportation as well as importation. In some cases, the lot can only be shipped with an independent scientific confirmation of species and/or age and you will need to obtain these at your own cost. If a lot contains elephant ivory, or any other wildlife material, you could be confused with elephant ivory (for example, mammoth ivory, walrus ivory, helmeted hornbill ivory), please see further important information in paragraph (c) if you are proposing to import the lot into the USA. We will not be obliged to cancel your purchase and refund the purchase price if you ask us to pay our fee to export, import or it is seized for any reason by a government authority. It is your responsibility to determine and satisfy the requirements of any applicable laws or regulations relating to the export or import of property containing such protected or regulated material.

### (c) US import ban on African elephant ivory

The USA prohibits the import of ivory from the African elephant. Any lot containing elephant ivory or other wildlife material that could be easily confused with elephant ivory (for example, mammoth ivory, walrus ivory, helmeted hornbill ivory) may be imported into the USA with results of a rigorous scientific test acceptable to Fish & Wildlife, which confirms that the material is not African elephant ivory. Where we have conducted such rigorous scientific testing on a lot prior to sale, we will make this clear in the lot description. In all other cases, we cannot confirm whether a lot contains African elephant ivory, and you will buy that lot at your own risk and be

responsible for any scientific test or other reports required for import into the USA at your own cost. If such scientific test is inconclusive or confirms the material is from the African elephant, we will not be obliged to cancel your purchase and refund the purchase price.

### (d) Lots of Iranian origin

Some countries prohibit or restrict the purchase and/or import of Iranian-origin 'works of conventional craftsmanship' (works that are not by a recognised artist and/or that have a function, for example, bowls, ewers, tiles, ornamental boxes). For example, the USA prohibits the import of this type of property and its purchase by US persons (wherever located). Other countries, such as Canada, only permit the import of this property in certain circumstances. As a convenience to buyers, Christie's indicates under the title of a lot if the lot originates from Iran (Persia). It is your responsibility to ensure you do not bid on or import a lot in contravention of the sanctions or trade embargoes that apply to you.

### (e) Gold

Gold of less than 18ct does not qualify in all countries as 'gold' and may be refused import in some countries as 'gold'.

### (f) Jewellery over 50 years old

Under current laws, jewellery over 50 years old which is worth £39,219 or more will require an export licence which we can apply for on your behalf. It may take up to eight weeks to obtain the export jewellery licence.

### (g) Watches

(i) Many of the watches offered for sale in this catalogue are pictured with straps made of endangered or protected animal materials such as alligator or crocodile. These lots are marked with the symbol - in the catalogue. These endangered species straps are shown for display purposes only and are not for sale. Christie's will remove and return the strap prior to shipment from the sale site. At some sale sites, Christie's may, at its discretion, make the displayed endangered species strap available to the buyer of the lot free of charge if collected in person from the sale site within one year of the date of the sale. Please check with the department for details on a particular lot.

(ii) For all symbols and other markings referred to in paragraph H2, please note that **lots** are marked as a convenience to you, but we do not accept liability for errors or for failing to mark **lots**.

## I OUR LIABILITY TO YOU

(a) We give no **warranty** in relation to any statement made, or information given, by us or our representatives or employees, about any lot other than as set out in the **authenticity warranty** and, as far as we are allowed by law, all **warranties** and other terms which may be added to this agreement by law are excluded. The seller's **warranties** contained in paragraph E1 are their own and we do not have any liability to you in relation to those **warranties**.

(b) (i) We are not responsible to you for any reason (whether for breaking this agreement or any other matter relating to your purchase of, or bid for, any lot) other than in the event of fraud or fraudulent misrepresentation by us or other than as expressly set out in these Conditions of Sale; or

(ii) give any representation, **warranty** or guarantee or assume any liability of any kind in respect of any lot with regard to merchantability, fitness for a particular purpose, description, size, quality, condition, attribution, authenticity, rarity, importance, medium, provenance, exhibition history, literature, or historical materials. Except as required by local law, any **warranty** of any kind is excluded by this paragraph.

(c) In particular, please be aware that our written and telephone bidding services, Christie's LIVE™, condition reports, currency converter and saleroom video screens are free services and we are not responsible to you for any error (human or otherwise), omission or breakdown in these services.

(d) We have no responsibility to any person other than a buyer in connection with the purchase of any lot.

(e) If, in spite of the terms in paragraphs (a) to (d) or E2(i) above, we are found to be liable to you for any reason, we shall not have to pay more than the **purchase price** paid by you to us. We will not be responsible to you for any reason for loss of profits or business, loss of opportunity or value, expected savings or interest, costs, damages, or expenses.

## J OTHER TERMS

### 1 OUR ABILITY TO CANCEL

In addition to the other rights of cancellation contained in this agreement, we can cancel a sale of a lot if we reasonably believe that completing the transaction is, or may be, unlawful or that the sale places us or the seller under any liability to anyone else or may damage our reputation.

### 2 RECORDINGS

We may videotape and record proceedings at any auction. We will keep any personal information confidential, except to the extent disclosure is required by law. However, we may, through this process, use or share these recordings with another **Christie's Group** company and marketing partners to analyse our customers and to help us to tailor our services for buyers. If you do not want to be videotaped, you may make arrangements to make a telephone or written bid or bid on Christie's LIVE™ instead. Unless we agree otherwise in writing, you may not videotape or record proceedings at any auction.

### 3 COPYRIGHT

We own the copyright in all images, illustrations and written material produced by or for us relating to a lot (including the contents of our catalogues unless otherwise noted in the catalogue). You cannot use them without our prior written permission. We do not offer any guarantee that you will gain any copyright or other reproduction rights to the lot.

### 4 ENFORCING THIS AGREEMENT

If a court finds that any part of this agreement is not valid or is illegal or impossible to enforce, that part of the agreement will

be treated as being deleted and the rest of this agreement will not be affected.

## 5 TRANSFERRING YOUR RIGHTS AND RESPONSIBILITIES

You may not grant a security over or transfer your rights or responsibilities under these terms on the contract of sale with the buyer unless we have given our written permission. This agreement will be binding on your successors or estate and anyone who takes over your rights and responsibilities.

## 6 TRANSLATIONS

If we have provided a translation of this agreement, we will use this original version in deciding any issues or disputes which arise under this agreement.

## 7 PERSONAL INFORMATION

We will hold and process your personal information and may pass it to another **Christie's Group** company for use as described in, and in line with, our privacy policy at [www.christies.com](http://www.christies.com).

## 8 WAIVER

No failure or delay to exercise any right or remedy provided under these Conditions of Sale shall constitute a waiver of that or any other right or remedy, nor shall it prevent or restrict the further exercise of that or any other right or remedy. No single or partial exercise of such right or remedy shall prevent or restrict the further exercise of that or any other right or remedy.

## 9 LAW AND DISPUTES

This agreement, and any non-contractual obligations arising out of or in connection with this agreement, or any other rights you may have relating to the purchase of a lot will be governed by the laws of England and Wales. Before we or you start any court proceedings (except in the limited circumstances where the dispute, controversy or claim is related to proceedings brought by someone else and this dispute could be joined to those proceedings), we agree we will each try to settle the dispute by mediation following the Centre for Effective Dispute Resolution (CEDR) Model Mediation Procedure. We will use a mediator affiliated with CEDR who we and you agree to. If the dispute is not settled by mediation, you agree for our benefit that the dispute will be referred to and dealt with exclusively in the courts of England and Wales. However, we will have the right to bring proceedings against you in any other court.

## 10 REPORTING ON WWW.CHISTIES.COM

Details of all **lots** sold by us, including **catalogue descriptions** and prices, may be reported on [www.christies.com](http://www.christies.com). Sales totals are **hammer price plus buyer's premium** and do not reflect costs, financing fees, or application of buyer's or seller's credits. We regret that we cannot agree to requests to remove these details from [www.christies.com](http://www.christies.com).

## K GLOSSARY

**authentic:** a genuine example, rather than a copy or forgery of;

(i) the work of a particular artist, author or manufacturer, if the lot is described in the **Heading** as the work of that artist, author or manufacturer;

(ii) a work created within a particular period or culture, if the lot is described in the **Heading** as a work created during that period or culture;

(iii) a work for a particular origin source if the lot is described in the **Heading** as being of that origin or source; or

(iv) in the case of games, a work which is made of a particular material, if the lot is described in the **Heading** as being made of that material. **authenticity warranty:** the guarantee we give in this agreement that a lot is **authentic** as set out in section E2 of this agreement. **buyer's premium:** the charge the buyer pays us along with the **hammer price**.

**catalogue description:** the description of a lot in the catalogue for the auction, as amended by any saleroom notice.

**Christie's Group:** Christie's International Plc, its subsidiaries and other companies within its corporate group.

**condition:** the physical condition of a lot.

**due date:** has the meaning given to it in paragraph F1(a).

**estimate:** the price range included in the catalogue or any saleroom notice within which we believe a lot may sell. **Low estimate** means the lower figure in the range and **high estimate** means the higher figure. The **mid estimate** is the midpoint between the two.

**hammer price:** the amount of the highest bid the auctioneer accepts for the sale of a lot.

**Heading:** has the meaning given to it in paragraph E2.

**lot:** an item to be offered at auction (or two or more items to be offered at auction as a group).

**other damages:** any special, consequential, incidental or indirect damages of any kind or any damages which fall within the meaning of 'special', 'incidental' or 'consequential' under local law.

**purchase price:** has the meaning given to it in paragraph F1(a).

**provenance:** the ownership history of a lot.

**qualified:** has the meaning given to it in paragraph E2 and

**Qualified Headings** means the section headed **Qualified Headings** on the page of the catalogue headed 'Important Notices and Explanation of Cataloguing Practice'.

**reserve:** the confidential amount below which we will not sell a lot.

**saleroom notice:** a written notice posted next to the lot in the saleroom and on [www.christies.com](http://www.christies.com), which is also read to prospective telephone bidders and notified to clients who have left commission bids, or an announcement made by the auctioneer either at the beginning of the sale, or before a particular lot is auctioned.

**UPPER CASE TYPE:** means having all capital letters.

**warranty:** a statement or representation in which the person making it guarantees that the facts set out in it are correct.

## VAT SYMBOLS AND EXPLANATION

You can find a glossary explaining the meanings of words coloured in bold on this page at the end of the section of the catalogue headed 'Conditions of Sale'

### VAT payable

Symbol	
No Symbol	We will use the VAT Margin Scheme. No VAT will be charged on the <b>hammer price</b> . VAT at 20% will be added to the <b>buyer's premium</b> but will not be shown separately on our invoice.
†	We will invoice under standard VAT rules and VAT will be charged at 20% on both the <b>hammer price</b> and <b>buyer's premium</b> and shown separately on our invoice.
θ	For qualifying books only, no VAT is payable on the <b>hammer price</b> or the <b>buyer's premium</b> .
*	These <b>lots</b> have been imported from outside the EU for sale and placed under the Temporary Admission regime. Import VAT is payable at 5% on the <b>hammer price</b> . VAT at 20% will be added to the <b>buyer's premium</b> but will not be shown separately on our invoice.
Ω	These <b>lots</b> have been imported from outside the EU for sale and placed under the Temporary Admission regime. Customs Duty as applicable will be added to the <b>hammer price</b> and Import VAT at 20% will be charged on the Duty Inclusive <b>hammer price</b> . VAT at 20% will be added to the <b>buyer's premium</b> but will not be shown separately on our invoice.
α	The VAT treatment will depend on whether you have registered to bid with an EU or non-EU address: <ul style="list-style-type: none"> <li>• If you register to bid with an address <b>within</b> the EU you will be invoiced under the VAT Margin Scheme (see No Symbol above).</li> <li>• If you register to bid with an address <b>outside</b> of the EU you will be invoiced under standard VAT rules (see † symbol above)</li> </ul>
‡	For wine offered 'in bond' only. If you choose to buy the wine in bond no Excise Duty or Clearance VAT will be charged on the <b>hammer</b> . If you choose to buy the wine out of bond Excise Duty as applicable will be added to the <b>hammer price</b> and Clearance VAT at 20% will be charged on the Duty inclusive <b>hammer price</b> . Whether you buy the wine in bond or out of bond, 20% VAT will be added to the buyer's premium and shown on the invoice.

### VAT refunds: what can I reclaim?

If you are:

A non VAT registered UK or EU buyer		No VAT refund is possible
UK VAT registered buyer	No symbol and α	<b>The VAT amount in the buyer's premium cannot be refunded.</b> However, on request we can re-invoice you outside of the VAT Margin Scheme under normal UK VAT rules (as if the <b>lot</b> had been sold with a † symbol). Subject to HMRC's rules, you can then reclaim the VAT charged through your own VAT return.
	* and Ω	Subject to HMRC's rules, you can reclaim the Import VAT charged on the <b>hammer price</b> through your own VAT return when you are in receipt of a C79 form issued by HMRC. The VAT amount in the <b>buyer's premium</b> is invoiced under Margin Scheme rules so cannot normally be claimed back. However, if you request to be re-invoiced outside of the Margin Scheme under standard VAT rules (as if the <b>lot</b> had been sold with a † symbol) then, subject to HMRC's rules, you can reclaim the VAT charged through your own VAT return.
EU VAT registered buyer	No Symbol and α	<b>The VAT amount in the buyer's premium cannot be refunded.</b> However, on request we can re-invoice you outside of the VAT Margin Scheme under normal UK VAT rules (as if the <b>lot</b> had been sold with a † symbol). See below for the rules that would then apply.
	†	If you provide us with your EU VAT number we will not charge VAT on the <b>buyer's premium</b> . We will also refund the VAT on the <b>hammer price</b> if you ship the <b>lot</b> from the UK and provide us with proof of shipping, within three months of collection.
	* and Ω	<b>The VAT amount on the hammer and in the buyer's premium cannot be refunded.</b> However, on request we can re-invoice you outside of the VAT Margin Scheme under normal UK VAT rules (as if the <b>lot</b> had been sold with a † symbol). See above for the rules that would then apply.
Non EU buyer		If you meet <b>ALL</b> of the conditions in notes 1 to 3 below we will refund the following tax charges:
	No Symbol	We will refund the VAT amount in the <b>buyer's premium</b> .
	† and α	We will refund the VAT charged on the <b>hammer price</b> . VAT on the <b>buyer's premium</b> can only be refunded if you are an overseas business. The VAT amount in the <b>buyer's premium</b> cannot be refunded to non-trade clients.
	‡ (wine only)	No Excise Duty or Clearance VAT will be charged on the <b>hammer price</b> providing you export the wine while 'in bond' directly outside the EU using an Excise authorised shipper. VAT on the <b>buyer's premium</b> can only be refunded if you are an overseas business. <b>The VAT amount in the buyer's premium cannot be refunded to non-trade clients.</b>
	* and Ω	We will refund the Import VAT charged on the <b>hammer price</b> and the VAT amount in the <b>buyer's premium</b> .

1. We **CANNOT** offer refunds of VAT amounts or Import VAT to buyers who do not meet all applicable conditions in full. If you are unsure whether you will be entitled to a refund, please contact Client Services at the address below **before you bid**.

2. No VAT amounts or Import VAT will be refunded where the total refund is under £100.

3. In order to receive a refund of VAT amounts/Import VAT (as applicable) non-EU buyers must:

(a) have registered to bid with an address outside of the EU; **and**

(b) provide immediate proof of correct export out of the EU within the required time frames of: 30 days via a controlled export for † and Ω **lots**. All other **lots** must be exported within three months of collection.

4. Details of the documents which you must provide to us to show satisfactory proof of export/shipping are available from our VAT team at the address below. We charge a processing fee of £35.00 per invoice to check shipping/export documents. We will waive this processing fee if you appoint Christie's Shipping Department to arrange your export/shipping.

5. If you appoint Christie's Art Transport or one of our authorised shippers to arrange your export/shipping we will issue you with an export invoice with the applicable VAT or duties cancelled as outlined above. If you later cancel or change the shipment in a manner that infringes the rules outlined above we will issue a revised invoice charging you all applicable taxes/charges.

6. If you ask us to re-invoice you under normal UK VAT rules (as if the **lot** had been sold with a † symbol) instead of under the Margin Scheme the **lot** may become ineligible to be resold using the Margin Schemes. **Movement within the EU must be within 3 months from the date of sale.** You should take professional advice if you are unsure how this may affect you.

7. All invoicing requests must be received within four years from the date of sale. If you have any questions about VAT refunds please contact Christie's Client Services on info@christies.com  
Tel: +44 (0)20 7389 2886.  
Fax: +44 (0)20 7839 1611.

## SYMBOLS USED IN THIS CATALOGUE

The meaning of words coloured in **bold** in this section can be found at the end of the section of the catalogue headed 'Conditions of Sale'.

○ Christie's has a direct financial interest in the lot. See Important Notices and Explanation of Cataloguing Practice.

△ Owned by Christie's or another **Christie's Group** company in whole or part. See Important Notices and Explanation of Cataloguing Practice.

◆ Christie's has a direct financial interest in the **lot** and has funded all or part of our interest with the help of someone else. See Important Notices and Explanation of Cataloguing Practice.

λ Artist's Resale Right. See Section D3 of the Conditions of Sale.

• **Lot** offered without **reserve** which will be sold to the highest bidder regardless of the pre-sale estimate in the catalogue.

~ **Lot** incorporates material from endangered species which could result in export restrictions. See Section H2(b) of the Conditions of Sale.

? , \* , Ω , α , # , †  
See VAT Symbols and Explanation.

■  
See Storage and Collection Pages.

Please note that **lots** are marked as a convenience to you and we shall not be liable for any errors in, or failure to, mark a **lot**.

## IMPORTANT NOTICES AND EXPLANATION OF CATALOGUING PRACTICE

### CHRISTIE'S INTEREST IN PROPERTY CONSIGNED FOR AUCTION

△ **Property Owned in part or in full by Christie's**  
From time to time, Christie's may offer a **lot** which it owns in whole or in part. Such property is identified in the catalogue with the symbol △ next to its **lot** number.

○ **Minimum Price Guarantees**  
On occasion, Christie's has a direct financial interest in the outcome of the sale of certain lots consigned for sale. This will usually be where it has guaranteed to the Seller that whatever the outcome of the auction, the Seller will receive a minimum sale price for the work. This is known as a minimum price guarantee. Where Christie's holds such financial interest we identify such **lots** with the symbol ○ next to the **lot** number.

◆ **Third Party Guarantees/Irrevocable bids**  
Where Christie's has provided a Minimum Price Guarantee it is at risk of making a loss, which can be significant, if the **lot** fails to sell. Christie's therefore sometimes chooses to share that risk with a third party. In such cases the third party agrees prior to the auction to place an irrevocable written bid on the **lot**. The third party is therefore committed to bidding on the **lot** and, even if there are no other bids, buying the **lot** at the level of the written bid unless there are any higher bids. In doing so, the third party takes on all or part of the risk of the **lot** not being sold. If the **lot** is not sold, the third party may incur a loss. **Lots** which are subject to a third party guarantee arrangement are identified in the catalogue with the symbol ◆.

In most cases, Christie's compensates the third party in exchange for accepting this risk. Where the third party is the successful bidder, the third party's remuneration is based on a fixed financing fee. If the third party is not the successful bidder, the remuneration may either be based on a fixed fee or an amount calculated against the final **hammer price**. The third party may also bid for the **lot** above the written bid. Where the third party is the successful bidder, Christie's will report the final **purchase price** net of the fixed financing fee.

Third party guarantors are required by us to disclose to anyone they are advising their financial interest in any **lots** they are guaranteeing. However, for the avoidance of any doubt, if you are advised by or bidding through an agent on a **lot** identified as being subject to a third party guarantee you should always ask your agent to confirm whether or not he or she has a financial interest in relation to the **lot**.

### Other Arrangements

Christie's may enter into other arrangements not involving bids. These include arrangements where Christie's has given the Seller an Advance on the proceeds of sale of the **lot** or where Christie's has shared the risk of a guarantee with a partner without the partner being required to place an irrevocable written bid or otherwise participating in the bidding on the **lot**. Because such arrangements are unrelated to the bidding process they are not marked with a symbol in the catalogue.

### Bidding by parties with an interest

In any case where a party has a financial interest in a **lot** and intends to bid on it we will make a saleroom announcement to ensure that all bidders are aware of this. Such financial interests can include where beneficiaries of an Estate have reserved the right to bid on a **lot** consigned by the Estate or where a partner in a risk-sharing arrangement has reserved the right to bid on a **lot** and/or notified us of their intention to bid.

Please see <http://www.christies.com/financial-interest/> for a more detailed explanation of minimum price guarantees and third party financing arrangements.

Where Christie's has an ownership or financial interest in every **lot** in the catalogue, Christie's will not designate each **lot** with a symbol, but will state its interest in the front of the catalogue.

### POST 1950 FURNITURE

All items of post-1950 furniture included in this sale are items either not originally supplied for use in a private home or now offered solely as works of art. These items may not comply with the provisions of the Furniture and Furnishings (Fire) (Safety) Regulations 1988 (as amended in 1989 and 1993, the 'Regulations'). Accordingly, these items should not be used as furniture in your home in their current condition. If you do intend to use such items for this purpose, you must first ensure that they are reupholstered, restuffed and/or recovered (as appropriate) in order that they comply with the provisions of the Regulations.

### EXPLANATION OF CATALOGUING PRACTICE

Terms referred to in paragraph 2 are as follows:-  
A work catalogued with the name(s) or recognised designation of an artist, without any qualification, is, in our opinion, a work by the artist.

In other cases, the following expressions, with the following meanings are used:

"Attributed to ..."

in our opinion probably a work by the artist in whole or in part.

"Studio of ..."

"Workshop of ..."

in our opinion a work executed in the studio or workshop of the artist, possibly under his supervision.

"Circle of ..."

in our opinion a work of the period of the artist and showing his influence.

"Follower of ..."

in our opinion a work executed in the artist's style but not necessarily by a pupil.

"Manner of ..."

in our opinion a work executed in the artist's style but of a later date.

"After ..."

in our opinion a copy (of any date) of a work of the artist.

"Signed ..."

"Dated ..."

"Inscribed ..."

in our opinion the work has been signed/dated/ inscribed by the artist. The addition of a question mark indicates an element of doubt.

"With signature ..."

"With date ..."

"With inscription ..."

in our opinion the signature/date/inscription/stamp is by a hand other than that of the artist.

### REFERENCE NUMBERS

Where applicable, the numbers which accompany the title of each lot refer to the catalogue raisonné compiled by Felix Marcihac 'R. Laliq. oeuvre de Verre' (Paris 1994).

## STORAGE AND COLLECTION

### COLLECTION LOCATION AND TERMS

Specified **lots** (sold and unsold) marked with a filled square (■) not collected from Christie's by 5.00 pm on the day of the sale will, at our option, be removed to Cadogan Tate Ltd. Christie's will inform you if the **lot** has been sent offsite. Our removal and storage of the **lot** is subject to the terms and conditions of storage which can be found at [Christies.com/storage](http://Christies.com/storage) and our fees for storage are set out in the table below - these will apply whether the **lot** remains with Christie's or is removed elsewhere.

If the **lot** is transferred to Cadogan Tate Ltd, it will be available for collection from 12 noon on the second business day following the sale.

Please call Christie's Client Service 24 hours in advance to book a collection time at Cadogan Tate Ltd. All collections from Cadogan Tate Ltd. will be by pre-booked appointment only.

Tel: +44 (0)20 7839 9060

Email: [cscollectionsuk@christies.com](mailto:cscollectionsuk@christies.com).

If the **lot** remains at Christie's it will be available for collection on any working day 9.00am to 5.00pm. **Lots** are not available for collection at weekends.

### PAYMENT OF ANY CHARGES DUE

**ALL lots** whether sold or unsold will be subject to storage and administration fees. Please see the details in the table below. Storage Charges may be paid in advance or at the time of collection.

**Lots** may only be released on production of the 'Collection Form' from Christie's. **Lots** will not be released until all outstanding charges are settled.

### SHIPPING AND DELIVERY

Christie's Post-Sale Service can organise local deliveries or international freight. Please contact them on +44 (0)20 7752 3200 or [PostSaleUK@christies.com](mailto:PostSaleUK@christies.com). To ensure that arrangements for the transport of your lot can be finalised before the expiry of any free storage period, please contact Christie's Post-Sale Service for a quote as soon as possible after the sale.

### PHYSICAL LOSS & DAMAGE LIABILITY

Christie's will accept liability for physical loss and damage to sold **lots** whilst in storage. Christie's liability will be limited to the invoice purchase price including buyers' premium. Christie's liability will continue until the **lots** are collected by you or an agent acting for you following payment in full. Christie's liability is subject to Christie's Terms and Conditions of Liability posted on [www.christies.com](http://www.christies.com).

ADMINISTRATION FEE, STORAGE & RELATED CHARGES		
CHARGES PER LOT	LARGE OBJECTS E.g. Furniture, Large Paintings & Sculpture	SMALL OBJECTS E.g. Books, Luxury, Ceramics, Small Paintings
1-30 days after the auction	Free of Charge	Free of Charge
31st day onwards: Administration Fee	£70.00	£35.00
Storage per day	£8.00	£4.00
Loss & Damage Liability	Will be charged on purchased lots at 0.5% of the hammer price or capped at the total storage charge, whichever is the lower amount.	
All charges are subject to VAT. Please note that there will be no charge to clients who collect their lots within 30 days of this sale. Size to be determined at Christie's discretion.		

### CHRISTIE'S WAREHOUSE

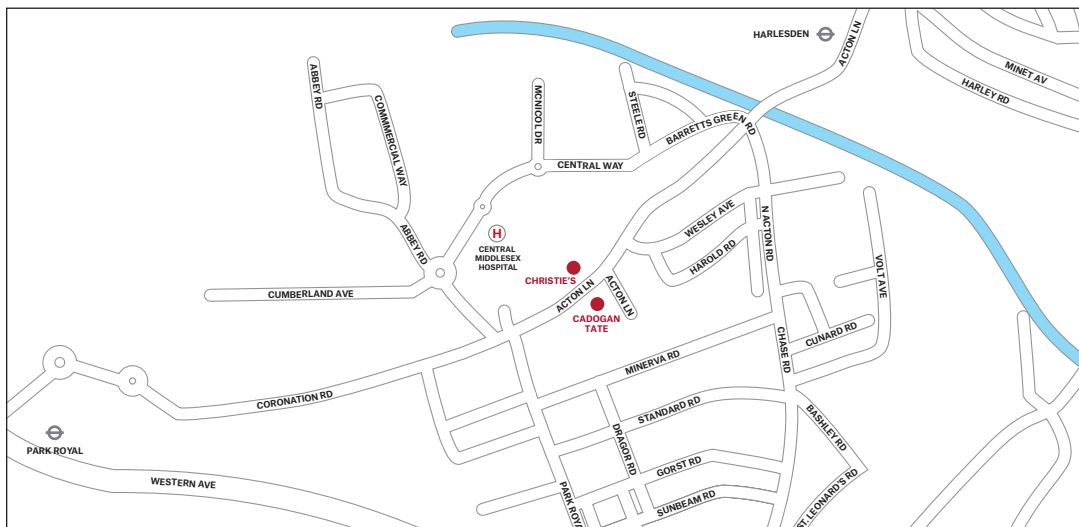
Unit 7, Central Park  
Acton Lane  
London NW10 7NQ

### CADOGAN TATE WAREHOUSE

241 Acton Lane,  
Park Royal,  
London NW10 7NP

### COLLECTION FROM CADOGAN TATE LTD

Please note that Cadogan Tate Ltd's opening hours are Monday to Friday 9.00 am to 5.00 pm and lots transferred to their warehouse are not available for collection at weekends.





The Joel Schur Collection of Important Works by Gallé

GALLÉ

*A 'Glycine' table lamp, circa 1905*

cameo glass

cameo signature Gallé

31 in. high; 20 ½ in. diameter

\$200,000-250,000

**DESIGN**

*New York, 7 June 2017*

**VIEWING**

2-6 June 2017

20 Rockefeller Plaza

New York, NY 10020

**CONTACT**

Carina Villinger

Specialist, Head of Department

[cvillinger@christies.com](mailto:cvillinger@christies.com)

+1 212 636 2236

**CHRISTIE'S**





## AN EDUCATED EYE

CHEFS-D'ŒUVRE D'UNE COLLECTION PRIVÉE SUISSE

*Paris, 16 May 2017*

### VIEWING

11-15 May 2017

9, Avenue Matignon

75008 Paris

### CONTACT

Sonja Ganne

[sganne@christies.com](mailto:sganne@christies.com)

+33 (0)1 40 76 86 21

ARMAND ALBERT RATEAU (1882-1938)

Paire de table lampes fennecs, circa 1920-1925

Patinated bronze, and alabaster

H 45 x L 23.2 cm (17 $\frac{1}{2}$  x 9 in.)

stamped A.-A RATEAU INVR PARIS

Provenance: Jeanne Lanvin

**CHRISTIE'S**



# WORLDWIDE SALEROOMS AND OFFICES AND SERVICES

## ARGENTINA

**BUENOS AIRES**  
+54 11 43 53 42 22  
Cristina Carlisle

## AUSTRALIA

**SYDNEY**  
+61 (0)2 9326 1422  
Ronan Sulich

## AUSTRIA

**VIENNA**  
+43 (0)1 533 88124  
Angela Bailou

## BELGIUM

**BRUSSELS**  
+32 (0)2 512 88 30  
Roland de Lathuy

## BRAZIL

**SÃO PAULO**  
+5511 3061 2576  
Nathalie Lenci

## CHILE

**SANTIAGO**  
+56 2 2 2831642  
Denise Ratnoff  
de Lira

## COLOMBIA

**BOGOTA**  
+571 635 54 00  
Juanita Madrinan

## DENMARK

**COPENHAGEN**  
+45 3962 2377  
Birgitta Hillingsø  
(Consultant)

+45 2612 0092  
Rikke Juel Brandt  
(Consultant)

## FINLAND AND THE BALTIC STATES

**HELSINKI**  
+358 40 5837945  
Barbro Schauman  
(Consultant)

## FRANCE

**BRITTANY AND THE LOIRE VALLEY**

+33 (0)6 09 44 90 78  
Virginie Gregory  
(Consultant)

## GREATER

**EASTERN FRANCE**  
+33 (0)6 07 16 34 25  
Jean-Louis Janin Daviet  
(Consultant)

## NORD-PAS DE CALAIS

+33 (0)6 09 63 21 02  
Jean-Louis Brémilts  
(Consultant)

## PARIS

+33 (0)1 40 76 85 85

## POITOU-CHARENTE

**AQUITAINE**

+33 (0)5 56 81 65 47  
Marie-Cécile Moueix

## PROVENCE -

**ALPES CÔTE D'AZUR**

+33 (0)6 71 99 97 67  
Fabienne Albertini-Cohon

## RHÔNE ALPES

+33 (0)6 61 81 82 53  
Dominique Pierron  
(Consultant)

## GERMANY

**DÜSSELDORF**  
+49 (0)21 14 91 59 352  
Arno Verkade

## FRANKFURT

+49 (0)71 317 3975  
Anja Schaller (Consultant)

## HAMBURG

+49 (0)40 27 94 073  
Christiane Gräfin zu Rantzau

## MUNICH

+49 (0)89 24 20 96 80  
Marie Christine Grafyn Hufn

## STUTTGART

+49 (0)71 12 26 96 99  
Eva Susanne  
Schweizer

## INDIA

**MUMBAI**

+91 (22) 2280 7905  
Sonal Singh

## DELHI

+91 (011) 6609 1170  
Sanjay Sharma

## INDONESIA

**JAKARTA**

+62 (0)21 7278 6268  
Charmie Hamami

## ISRAEL

**TEL AVIV**

+972 (0)3 695 0695  
Roni Gilat-Baharaff

## ITALY

**MILAN**

+39 02 303 2831

## ROME

+39 06 686 3333  
Marina Cicogna

## NORTH ITALY

+39 348 3131 021  
Paola Gradi  
(Consultant)

## TURIN

+39 347 2211 541  
Chiara Massimello  
(Consultant)

## VENICE

+39 041 277 0086  
Bianca Arrivabene Valenti  
Gonzaga (Consultant)

## BOLOGNA

+39 051 265 154  
Benedetta Possati Vittorio  
Veneti (Consultant)

## GENOA

+39 010 245 3747  
Rachele Guacciardi  
(Consultant)

## FLORENCE

+39 055 219 012  
Alessandra Niccolini di  
Camugliano (Consultant)

## CENTRAL & SOUTHERN ITALY

+39 348 520 2974  
Alessandra Allaria  
(Consultant)

## JAPAN

**TOKYO**

+81 (0)3 6267 1766  
Chie Banta

## MALAYSIA

**KUALA LUMPUR**  
+60 3 6207 9230  
Lim Meng Hong

## MEXICO

**MEXICO CITY**  
+52 55 5281 5546  
Gabriela Lobo

## MONACO

+37 97 97 11 00  
Nancy Dotta

## THE NETHERLANDS

**-AMSTERDAM**

+31 (0)20 57 55 255

## NORWAY

**OSLO**

+47 975 800 78  
Katinka Traaseth  
(Consultant)

## PEOPLES REPUBLIC OF CHINA

**BEIJING**

+86 (0)10 8583 1766

## HONG KONG

+852 2760 1766

## SHANGHAI

+86 (0)21 6355 1766

## PORTUGAL

**LISBON**

+351 919 317 233  
Mafalda Pereira Coutinho  
(Consultant)

## RUSSIA

**MOSCOW**

+7 495 937 6364  
+44 20 7389 2318  
Katya Vinokurova

## SINGAPORE

**SINGAPORE**

+65 6735 1766  
Nicole Tee

## SOUTH AFRICA

**CAPE TOWN**

+27 (21) 761 2676  
Juliet Lomberg  
(Independent Consultant)

## DURBAN & JOHANNESBURG

+27 (31) 207 8247  
Gillian Scott-Berning  
(Independent Consultant)

## WESTERN CAPE

+27 (44) 533 5178  
Annabelle Conyngham  
(Independent Consultant)

## SOUTH KOREA

**SEOUL**

+82 2 720 5266  
Hye-Kyung Bae

## SPAIN

**MADRID**

+34 (0)91 532 6626  
Juan Varez  
Dalia Padilla

## SWEDEN

**STOCKHOLM**

+46 (0)73 645 2891  
Claire Ahman (Consultant)  
+46 (0)70 9369 201  
Louise Dyllén (Consultant)

## SWITZERLAND

**-GENEVA**

+41 (0)22 319 1766  
Eveline de Proyart

## ZÜRICH

+41 (0)44 268 1010  
Dr. Bertold Mueller

## TAIWAN

**TAIPEI**

+886 2 2736 3356  
Ada Ong

## THAILAND

**BANGKOK**

+66 (0)2 652 1097  
Yaovaneer Nirandara  
Punchalee Phenjati

## TURKEY

**ISTANBUL**

+90 (532) 558 7514  
Eda Kehale Argun  
(Consultant)

## UNITED ARAB EMIRATES

**DUBAI**

+971 (0)4 425 5647

## UNITED KINGDOM

**-LONDON, KING STREET**

+44 (0)20 7839 9060

## -LONDON, SOUTH KENSINGTON

+44 (0)20 7930 6074

## NORTH AND NORTHEAST

+44 (0)20 3219 6010  
Thomas Scott

## NORTHWEST AND WALES

+44 (0)20 7752 3033  
Jane Blood

## SOUTH

+44 (0)1730 814 300  
Mark Wrey

## SCOTLAND

+44 (0)131 225 4756  
Bernard Williams  
Robert Lagneau  
David Bowes-Lyon  
(Consultant)

## ISLE OF MAN

+44 (0)20 7389 2032

## CHANNEL ISLANDS

+44 (0)20 7389 2032

## IRELAND

+353 (0)87 638 0996  
Christine Ryall (Consultant)

## UNITED STATES

**CHICAGO**

+1 312 787 2765  
Steven Zick

## DALLAS

+1 214 599 0735  
Capera Ryan

## HOUSTON

+1 713 802 0191  
Jessica Pfifer

## LOS ANGELES

+1 310 385 2600  
Sonya Roth

## MIAMI

+1 305 445 1487  
Jessica Katz

## -NEW YORK

+1 212 636 2000

## SAN FRANCISCO

+1 415 982 0982  
Ellanor Netides

## AUCTION SERVICES

**CORPORATE COLLECTIONS**

Tel: +44 (0)20 7389 2548  
Email: norchard@christies.com

## FINANCIAL SERVICES

Tel: +44 (0)20 7389 2624  
Fax: +44 (0)20 7389 2204

## HERITAGE AND TAXATION

Tel: +44 (0)20 7389 2101  
Fax: +44 (0)20 7389 2300  
Email: rcorbett@christies.com

## PRIVATE COLLECTIONS AND COUNTRY HOUSE SALES

Tel: +44 (0)20 7389 2343  
Fax: +44 (0)20 7389 2225  
Email: awatters@christies.com

## MUSEUM SERVICES, UK

Tel: +44 (0)20 7389 2570  
Email: lindsay@christies.com

## VALUATIONS

Tel: +44 (0)20 7389 2464  
Fax: +44 (0)20 7389 2038  
Email: murray@christies.com

## OTHER SERVICES

**CHRISTIE'S EDUCATION LONDON**

Tel: +44 (0)20 7665 4350  
Email: london@christies.com

## NEW YORK

Tel: +1 212 355 1501  
Fax: +1 212 355 7370  
Email: newyork@christies.com

## HONG KONG

Tel: +852 2978 6747  
Fax: +852 2525 3856  
Email: hongkong@christies.com

## CHRISTIE'S FINE ART STORAGE SERVICES

**NEW YORK**

+1 212 974 4570  
Email: newyork@cfass.com

## SINGAPORE

Tel: +65 6543 5252  
Email: singapore@cfass.com

## CHRISTIE'S INTERNATIONAL REAL ESTATE

### NEW YORK

Tel: +1 212 468 7182  
Fax: +1 212 468 7141  
Email: info@christiesrealestate.com

### LONDON

Tel: +44 20 7389 2551  
Fax: +44 20 7389 2168  
Email: info@christiesrealestate.com

### HONG KONG

Tel: +852 2978 6788  
Fax: +852 2973 0799  
Email: info@christiesrealestate.com

• DENOTES SALEROOM

ENQUIRIES – Call the Saleroom or Office  
For a complete salerooms & offices listing go to christies.com

EMAIL – info@christies.com

27/03/17

# CHRISTIE'S

## CHRISTIE'S INTERNATIONAL PLC

François Pinault, Chairman  
Patricia Barbizet, Deputy Chairwoman  
Guillaume Cerutti, Chief Executive Officer  
Jussi Pylkkänen, Global President  
Stephen Brooks, Deputy Chief Executive Officer  
Loïc Brivezac, Gilles Erulim, Gilles Pagniez  
Héloïse Temple-Boyer  
Sophie Carter, Company Secretary

## INTERNATIONAL CHAIRMEN

François Curiel, Chairman, Asia Pacific  
Stephen Lash, Chairman Emeritus, Americas  
The Earl of Snowdon, Honorary Chairman, EMERI  
Charles Cator, Deputy Chairman, Christie's Int.  
Xin Li, Deputy Chairwoman, Christie's Int.

## CHRISTIE'S EUROPE, MIDDLE EAST, RUSSIA AND INDIA (EMERI)

### PRESIDENT

Prof. Dr. Dirk Boll

### CHAIRMAN'S OFFICE, UK

Orlando Rock, Chairman  
Noël Annesley, Honorary Chairman;  
Richard Roundell, Vice Chairman;  
Robert Copley, Deputy Chairman;  
The Earl of Halifax, Deputy Chairman;  
Francis Russell, Deputy Chairman;  
Julia Delves Broughton, James Hervey-Bathurst,  
Nicholas White, Mark Wrey

## SENIOR DIRECTORS, EMERI

Simon Andrews, Mariolina Bassetti, Jeremy Bentley,  
Ellen Berkeley, Jill Berry, Giovanna Bertazzoni,  
Edouard Boccon-Gibod, Peter Brown,  
Olivier Camu, Sophie Carter, Benjamin Clark,  
Karen Cole, Paul Cutts, Isabelle de La Bruyere,  
Roland de Lathuy, Eveline de Proyart,  
Leila de Vos, Harriet Drummond, David Elswood,  
David Findlay, Margaret Ford, Edmond Francey,  
Daniel Gallen, Roni Gilat-Baharaff, Karen Harkness,  
Philipp Harley, James Hastie, Karl Hermanns,  
Paul Hewitt, Rachel Hilderley, Mark Hinton,  
Nick Hough, Michael Jeha, Donald Johnston,  
Erem Kassim-Lakha, Nicholas Lambourn,  
William Lorimer, Catherine Manson,  
Nic McElhatton (Chairman, South Kensington),  
Jeremy Morrison, Nicholas Orchard,  
Francis Outred, Henry Pettifer, Steve Phipps,  
Will Porter, Paul Reason, Christiane Rantzau,  
Tara Rastrick, Amjad Rauf, François de Ricqlès,  
William Robinson, Matthew Rubinger,  
Andreas Rumberl, Tim Schmelcher, John Stainton,  
Alexis de Tiesenhausen, Lynne Turner,  
Jay Vinzce, Andrew Ward, David Warren,  
Andrew Waters, Harry Williams-Bulkeley,  
Martin Wilson, André Zlatinger

## DIRECTORS, UK

Zoe Ainscough, Cristian Albu, Marco Almeida,  
Maddie Amos, Katharine Arnold, Alexis Ashot,  
Alexandra Baker, Karl Barry, Sven Becker,  
Jane Blood, Piers Boothman, David Bowes-Lyon,  
Louise Broadhurst, Robert Brown,  
Lucy Campbell, Jason Carey, Sarah Charles,  
Romilly Collins, Ruth Cornett, Nicky Crosbie,  
Armelle de Laubier-Rhally, Eugenio Donadoni,  
Christopher O'Neil-Dunne, Anna Evans,  
Arne Everwijn, Adele Falconer, Nick Finch,  
Emily Fisher, Peter Flory, Elizabeth Floyd,  
Nina Foote, Christopher Forrest, Giles Forster,  
Zita Gibson, Alexandra Gill, Keith Gill,  
Leonie Grainger, Simon Green, David Gregory,  
Annabel Hesketh, Sydney Hornsby, Peter Horwood,  
Kate Hunt, Simon James, Sabine Kegel,  
Hans-Peter Keller, Tjabel Klof, Robert Lagneau,  
Joanna Langston, Tina Law, Adriana Leese,  
Tom Legh, Brandon Lindberg, Laura Lindsay,  
Murray Macaulay, Graeme Maddison,  
Sarah Mansfield, Nicolas Martineau, Roger Massey,  
Joy McCall, Neil McCutcheon, Michelle McMullan,  
Daniel McPherson, Neil Millen, Jeremy Morgan,  
Leonie Moschner, Giles Mountain, Chris Munro,  
Liberte Nuti, Beatriz Ordovás, Rosalind Patient,  
Anthea Peers, Keith Penton, Romain Pinganaud,  
Sara Plumbly, Anne Qaimmaqami, Marcus Rådecke,  
Pedram Rasti, Lisa Redpath, Sumiko Roberts,  
Tom Rooth, Alice de Roquemaurel,  
Francois Rothlisberger, Patrick Saich,  
Rosemary Scott, Tom Scott, Nigel Shorthouse,  
Dominic Simpson, Nick Sims, Clementine Sinclair,  
Sonal Singh, Katie Siveyer, Nicola Steel, Kay Sutton,  
Rakhi Talwar, Timothy Triptree, Thomas Venning,  
Edwin Vos, Amelia Walker, Rosanna Widen,  
Ben Wiggins, Sophie Wiles, Bernard Williams,  
Georgina Wislenach, Toby Woolley, Geoff Young

## ASSOCIATE DIRECTORS, UK

Guy Agazarian, Ksenia Apukhtina, Fiona Baker,  
Sarah Boswell, Mark Bowis, Phill Brakefield,  
Clare Bramwell, Jenny Brown, David Cassidy,  
Marie-Louise Chaldecott, Helen Culver Smith,  
Laetitia Delalay, Charlotte Delaney, Milo Dickinson,  
Freddie De Rougemont, Grant Deudney,  
Howard Dixon, Virginie Dulucq, David Ellis,  
Antonia Essex, Kate Flitcroft, Eva French,  
Pat Galligan, Elisa Galuppi, Julia Grant,  
Pippa Green, Angus Granlund, Christine Haines,  
Coral Hall, Adeline Han, Charlotte Hart,  
Daniel Hawkins, Anke Held, Valerie Hess,  
Carolyn Holmes, Adrian Hume-Sayer, James Hyslop,  
Helena Ingham, Pippa Jacobm, Goady Kelly,  
Hala Khayat, Alexandra Kindermann, Julia Kiss,  
Polly Knewstub, Mark Henry Lampé, Aoife Leach,  
Rob Leatham, Antoine Leboutteiller, Peter Mansell,  
Stephanie Manstein, Amparo Martinez Russocto,  
Astrid Mascher, Georgie Mawby, David McLachlan,  
Lynda McLeod, Kateryna Merkalenko, Toby Monk,  
Rosie O'Connor, Christopher Petre, Louise Phelps,  
Eugene Pooley, Sarah Rancans, Alexandra Reid,  
Sarah Reynolds, Meghan Russell, Pat Savage,  
Julie Schutz, Hannah Schweiger, Angus Scott,  
Ben Slinger, James Smith, Graham Smithson,  
Mark Stephen, Annelies Stevens, Charlotte Stewart,  
Dean Stimpson, Dominique Suiweg, Keith Tabley,  
Iain Tarling, Sarah Tennant, Flora Turnbull,  
Paul van den Biesen, Mieke Van Embden,  
Ben Van Rensburg, Shanthi Veigas, Julie Vial,  
Assunta Grafon von Moy, Anastasia von Seibold,  
Zelie Walker-Noble, Tony Walshe, Gillian Ward,  
Chris White, Annette Wilson, Julian Wilson,  
Miriam Winson-Alio, Elissa Wood,  
Suzanne Yalcin-Pennings, Charlotte Young

## CHRISTIE'S ADVISORY BOARD, EUROPE

Pedro Girao, Chairman,  
Arpad Busson, Kemal Has Cingillioglu,  
Genevra Elkann, I. D. Fürstin zu Fürstenberg,  
Laurence Graff, H.R.H. Prince Pavlos of Greece,  
Marquesa de Bellavista Mrs Alicia Kopolowitz,  
Robert Manoukian, Rosita, Duchess of Marlborough,  
Countess Daniela Memmo d'Amelio,  
Usha Mittal, Çigdem Simavi





CHRISTIE'S

8 KING STREET ST. JAMES'S LONDON SW1Y 6QT